

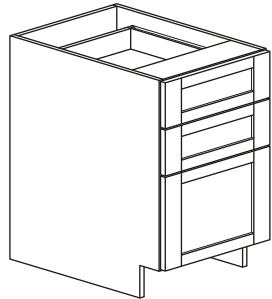
Goods covered under 5 year limited warranty offered by Euro-Rite Cabinets Ltd. For full warranty information, please visit www.eurorite.com -support-warranty.

Les marchandises couvertes au-dessous de 5 ans ont limité la garantie offerte par Euro-Rite Cabinets Ltd. Pour des informations complètes de garantie, visitez svp www.eurorite.com - appui - garantie

Las mercancías cubiertas bajo 5 años limitaron la garantía ofrecida por Euro-Rite Cabinets Ltd. Para la información completa de la garantía, visite por favor www.eurorite.com - ayuda - garantía

Assembly Instructions

Instructions D'Assemblée Instrucciones de asamblea

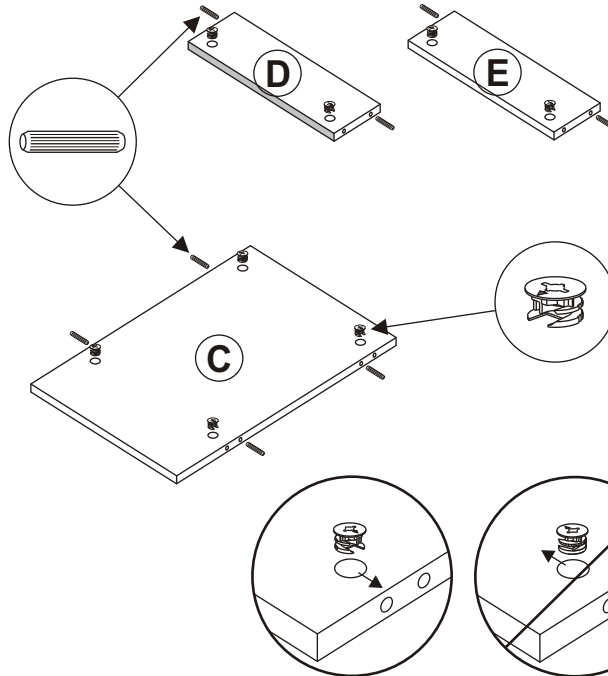
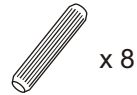


Desk Drawer Cabinet

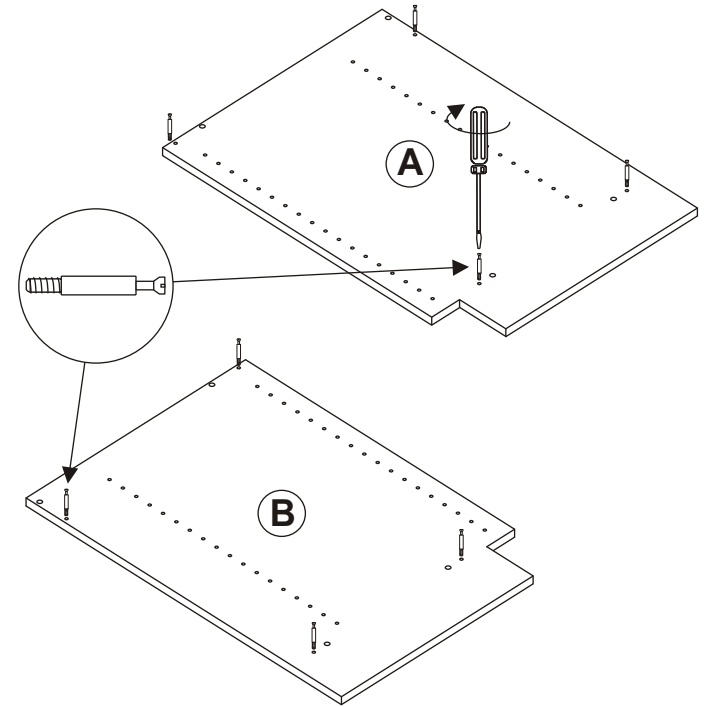
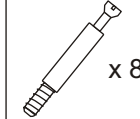
Cabinet De Tiroir De Bureau
Gabinete Del Cajón Del Escritorio



1

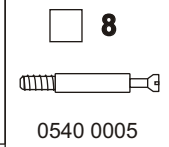


2



BOX
Boîte
Caja

A



0540 0005



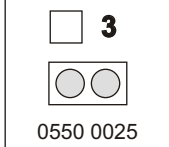
0540 0025



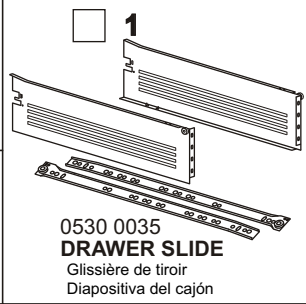
0540 0015



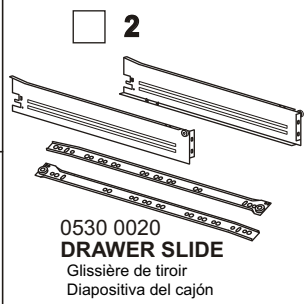
0540 0090



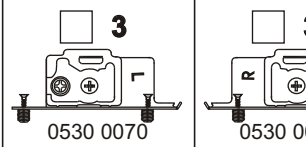
0550 0025



0530 0035
DRAWER SLIDE
Glissière de tiroir
Diapositiva del cajón

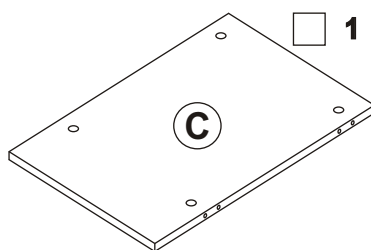


0530 0020
DRAWER SLIDE
Glissière de tiroir
Diapositiva del cajón

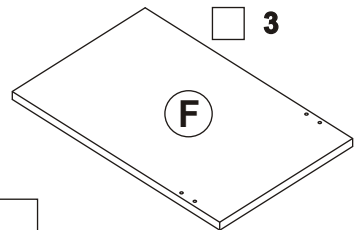


0530 0070

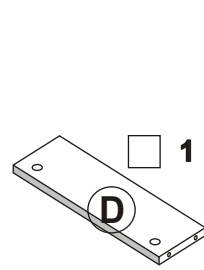
0530 0075



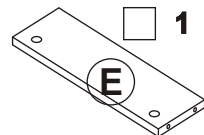
ASSEMBLY SHELF
Étagère d'Assemblée
Estante de la asamblea



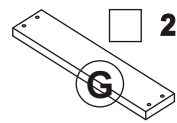
DRAWER BOTTOM
Le fond de tiroir
Fondo del cajón



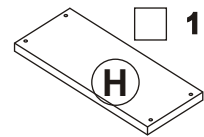
FRONT RAIL
Rail avant
Carril delantero



BACK RAIL
Rail arrière
Carril trasero



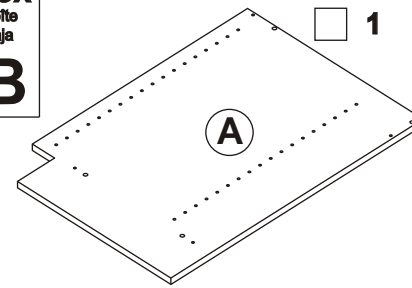
DRAWER BACK (STANDARD)
Dos de tiroir (standard)
Parte posteriora del cajón (estándar)



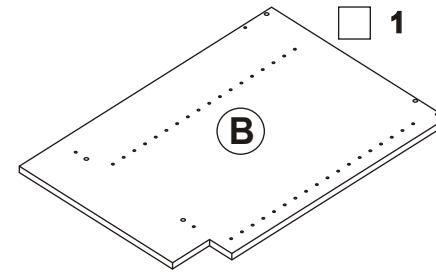
DRAWER BACK (HIGH)
Dos de tiroir (haut)
Parte posteriora del cajón (alta)

BOX
Boîte
Caja

B



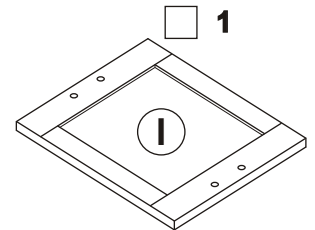
LEFT HAND GABLE (SIDE PANEL)
Pignon de main gauche (panneau latéral)
Aguilón de la mano izquierda (panel lateral)



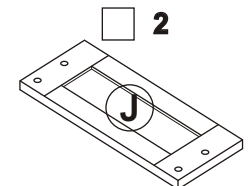
RIGHT HAND GABLE (SIDE PANEL)
Pignon droit (panneau latéral)
Aguilón derecho (panel lateral)

BOX
Boîte
Caja

C



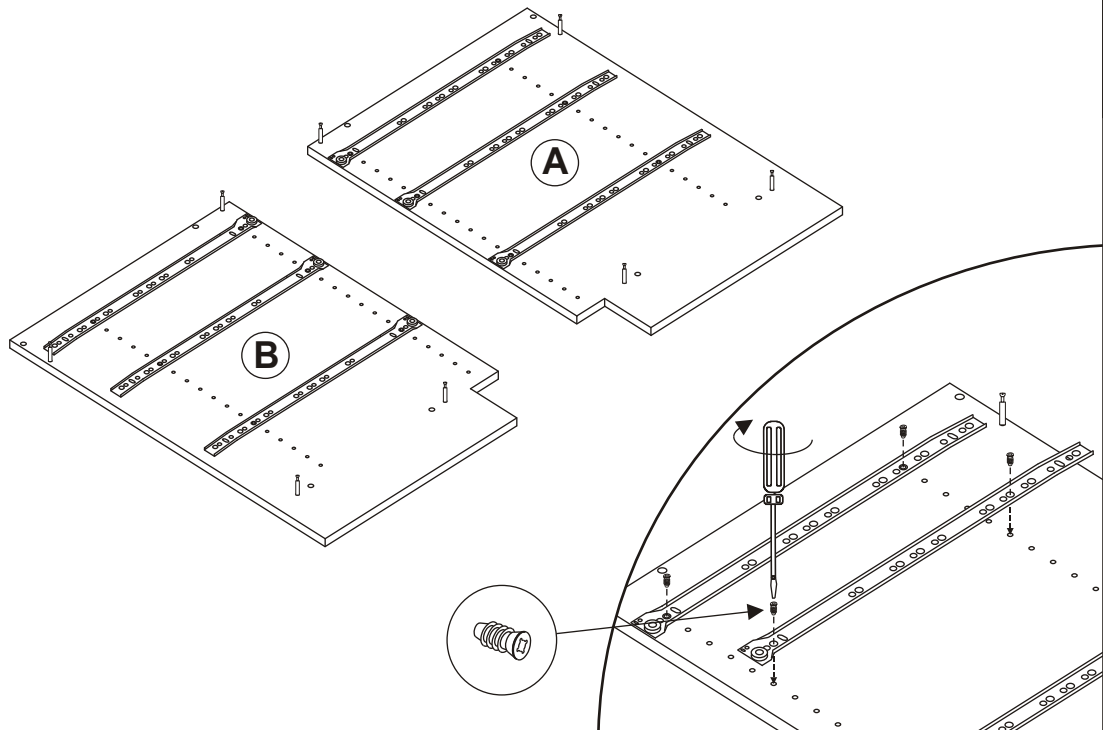
DRAWER FACE 12 1/2" h
Visage de tiroir
Cara del cajón



DRAWER FACE 6" h
Visage de tiroir
Cara del cajón

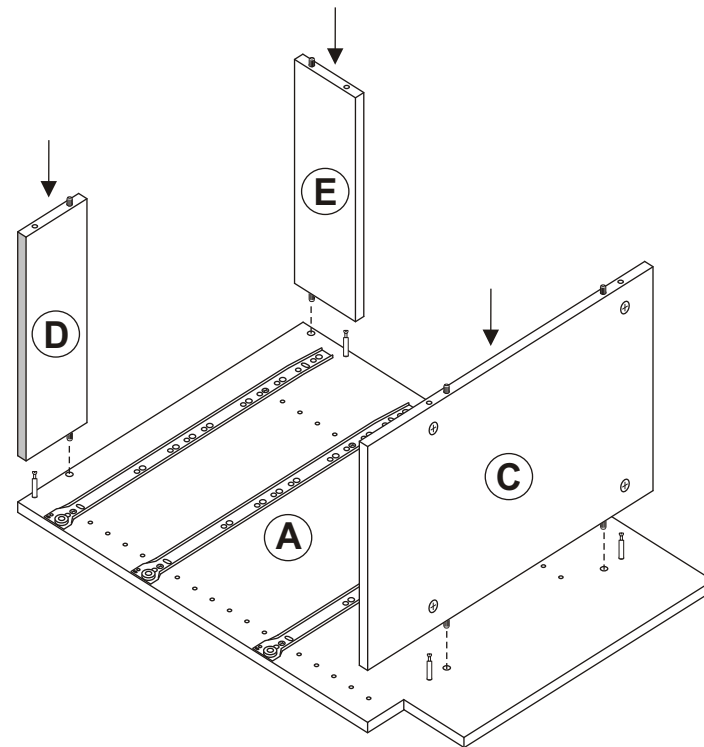
3

 x 12



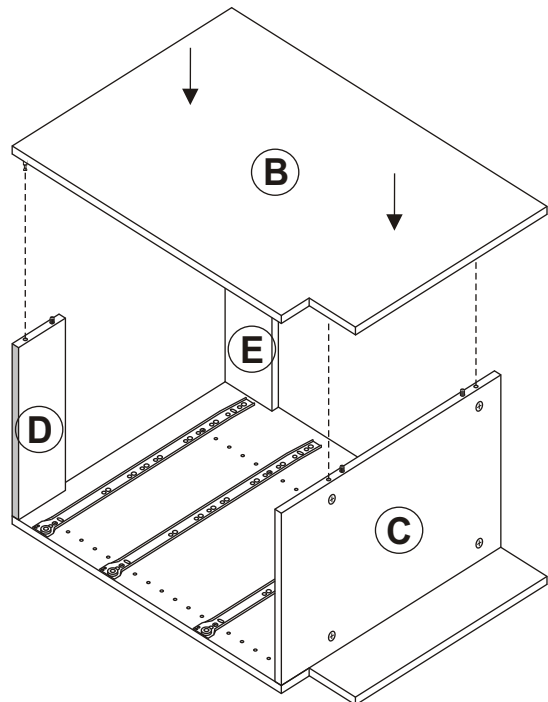
4

C → A
 D → A
 E → A

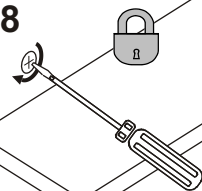


5

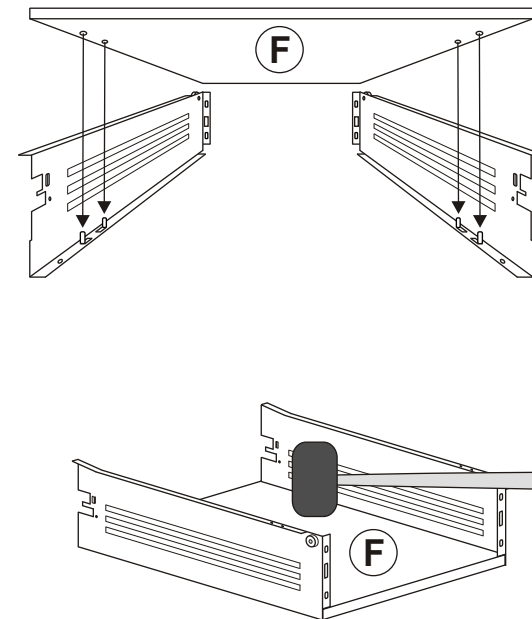
B → C, D & E



X 8



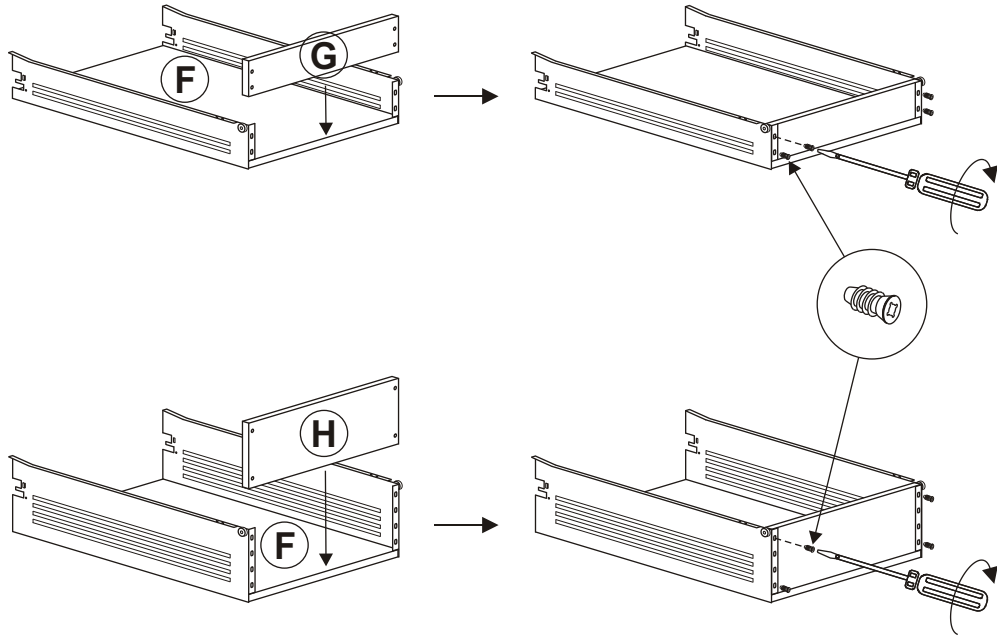
6




7


 x 12

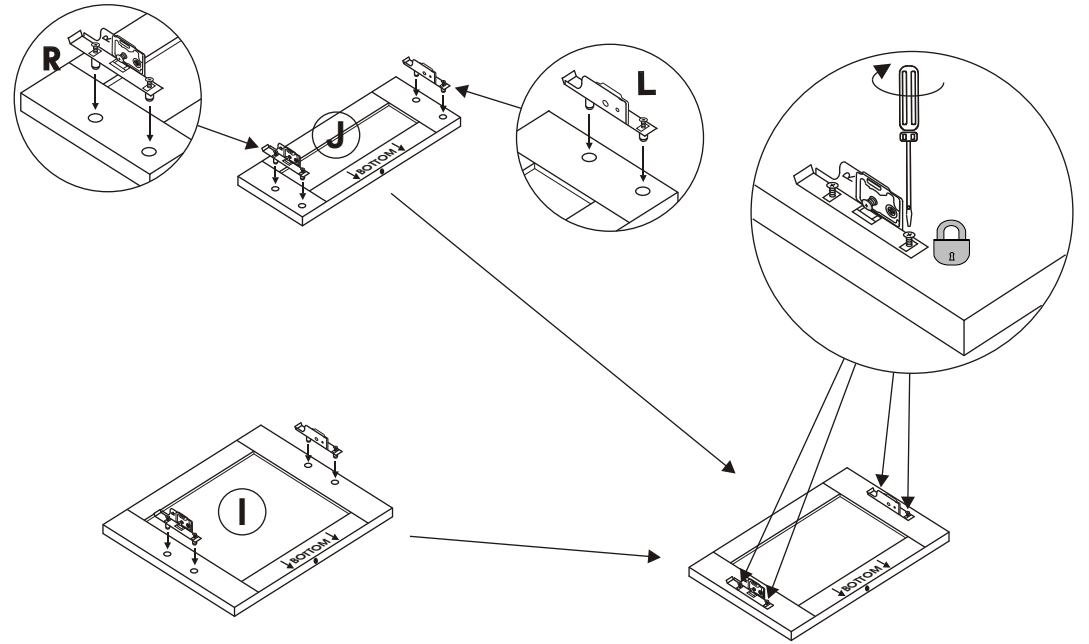
G → F
H → F



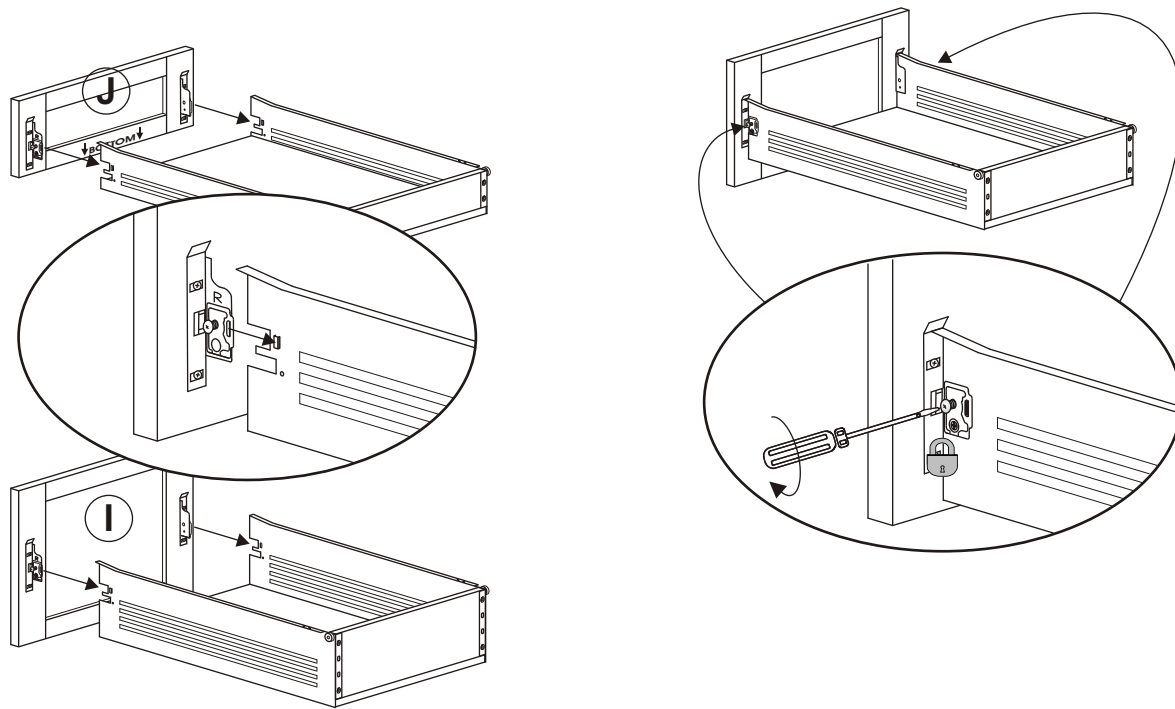
8

 x 3

 x 3



9



10

