

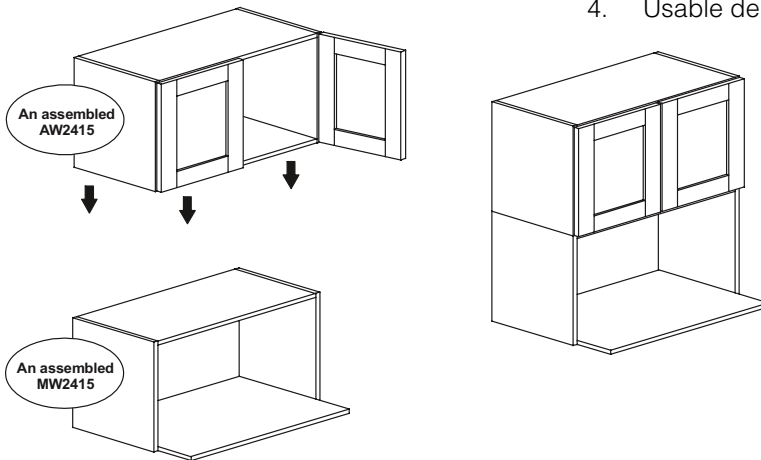
# INSTALLATION TIPS

## MICROWAVE CABINET

We have developed a unique system for any microwave configuration. The MW cabinet has an extended bottom shelf and no doors to house your microwave. This cabinet is available in either 24" or 30" width. It is to be assembled and attached to any 2 door wall cabinet. See page 2.37 for pricing.

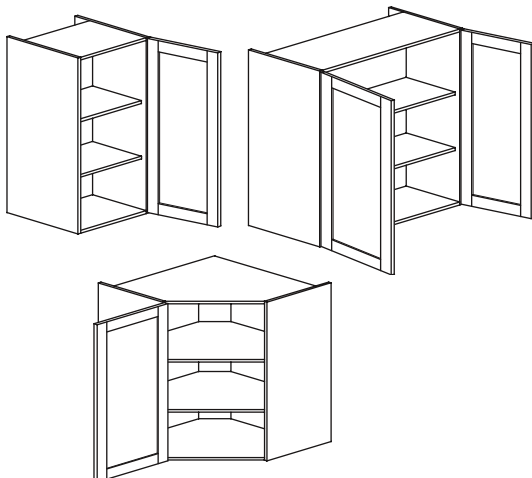
When using a microwave wall cabinet here are a few things to remember:

1. Verify height allowance when designing the space.
2. Attach the MW cabinet to the wall cabinet carriage bolts.
3. To cover the side seam, you can install a DC30.
4. Usable depth is 15 3/4".



## 15" GABLE DEPTH WALL CABINETS

Euro-Rite offers wall cabinets with 15" deep gables. The benefit of using a cabinet with 15" deep gables (sides) is the ability to stagger different heights of cabinets to crown molding without an apple basket cut.



1. **\*\*important\*\* the INSIDE depth of the cabinet remains the same as our standard wall cabinets, 11" deep.**
2. On a corner wall with 15" deep gables, you must increase the cabinet width by 3".
3. Full 15" deep wall cabinets are available as a custom. See page 7.3 for available customs and pricing.
4. Some framing/cleating is required to attach these cabinets to the wall.