

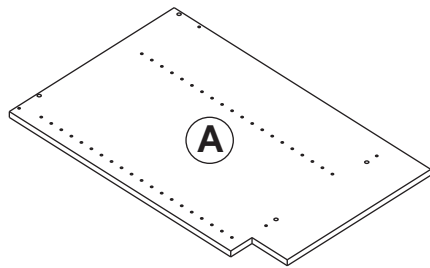
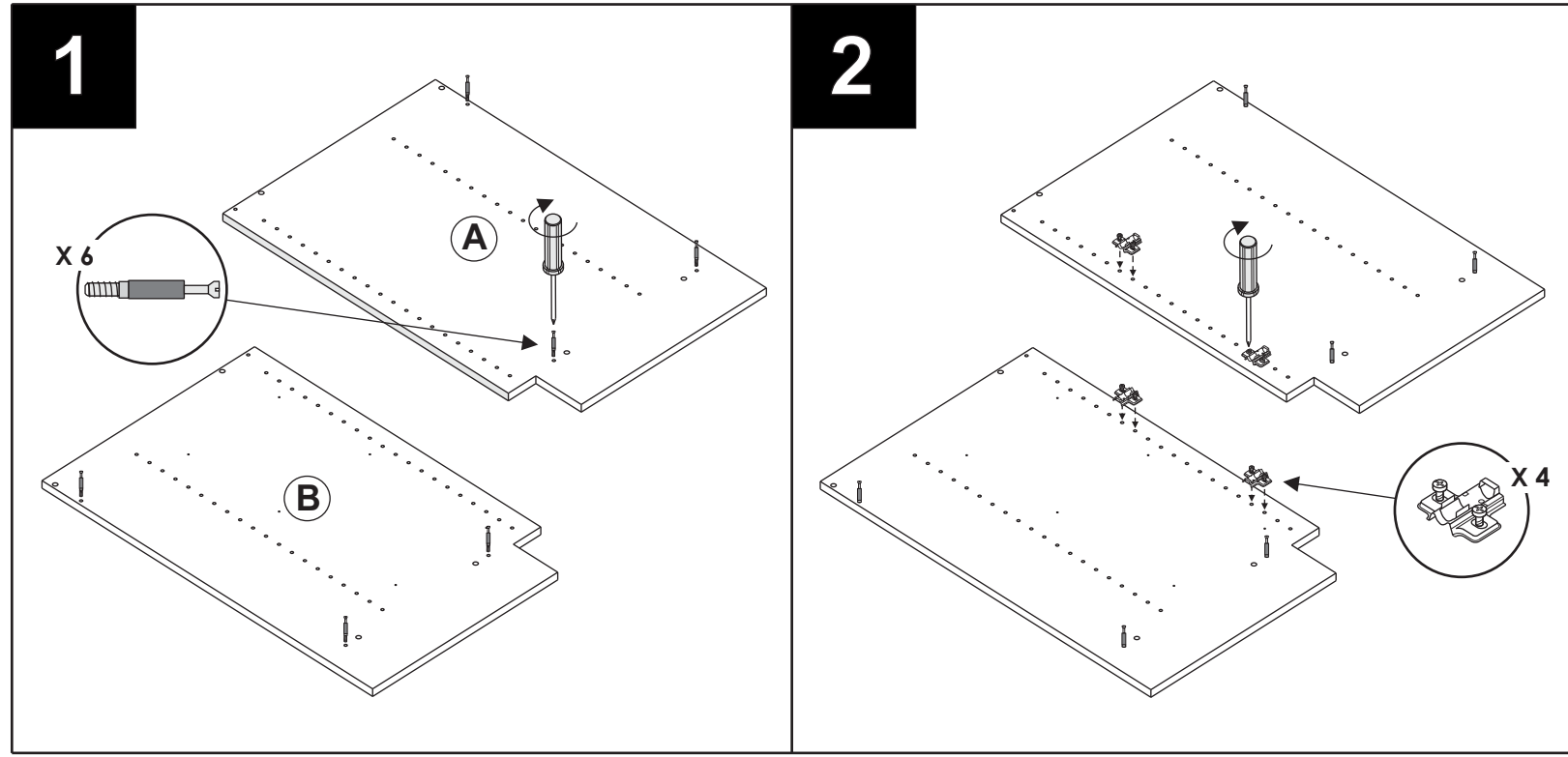
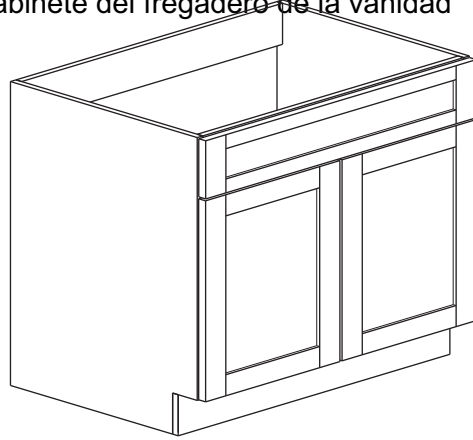
ADVANTAGEONE

Assembly Instructions

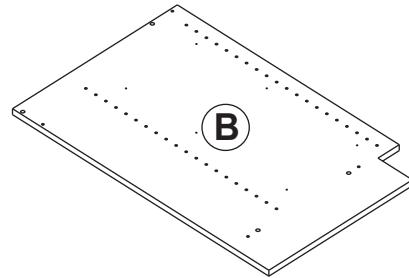
Instructions D'Assemblée
Instrucciones de ensambla

Vanity Sink Cabinet

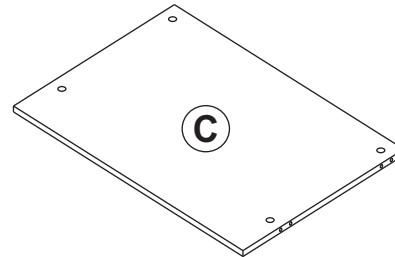
Meuble lavabo
Gabinete del fregadero de la vanidad



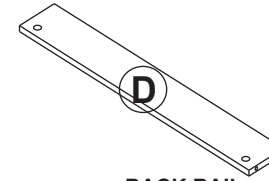
1 X LEFT HAND GABLE (SIDE PANEL)
Pignon de main gauche (panneau latéral)
Aguilón de la mano izquierda (panel lateral)



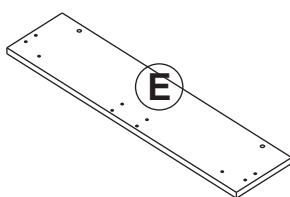
1 X RIGHT HAND GABLE (SIDE PANEL)
Pignon droit (panneau latéral)
Aguilón derecho (panel lateral)



1 X ASSEMBLY SHELF
Étagère d'Assemblée
Estante de la asamblea



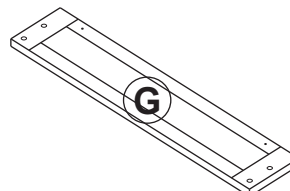
1 X BACK RAIL
Rail arrière
Carril trasero



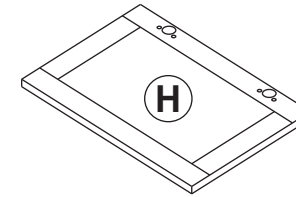
1 X FRONT SINK PANEL
Évier Front Panel
Panel frontal fregadero



1 X TOE KICK
Coup-de-pied D'Orteil
Retroceso Del Dedo del pie



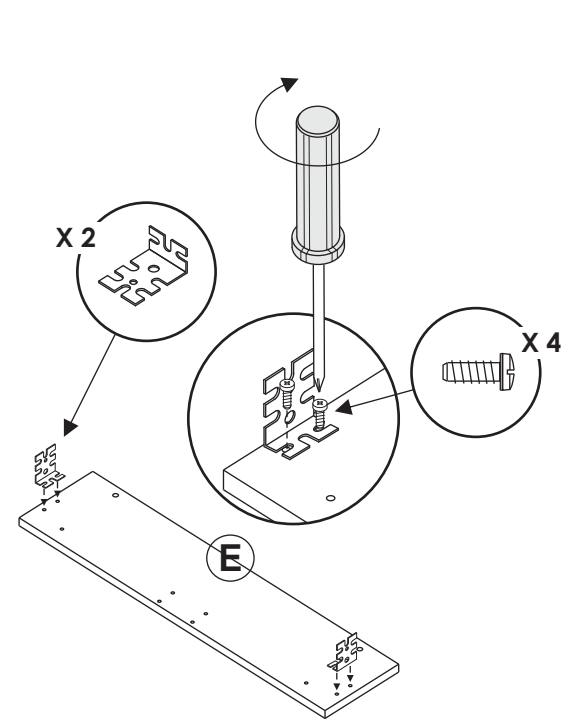
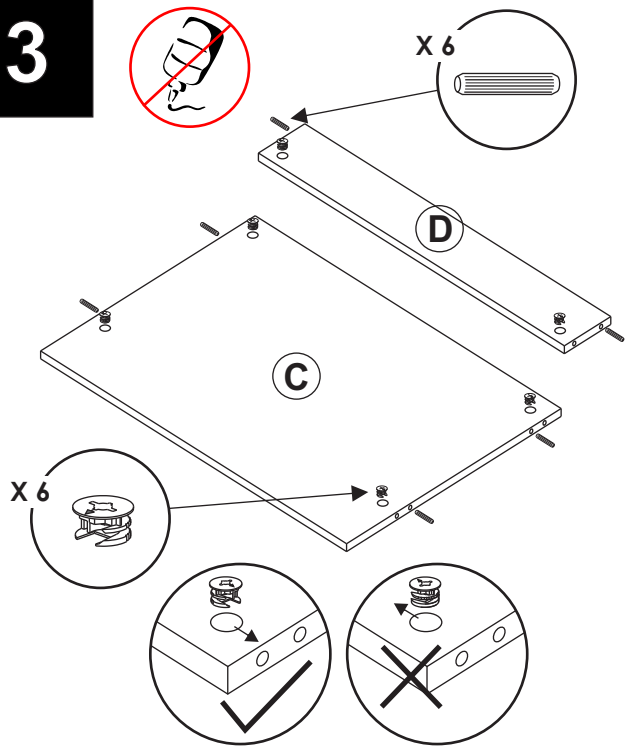
1 X SINK FACE 6" h
Visage d'évier
Cara del fregadero



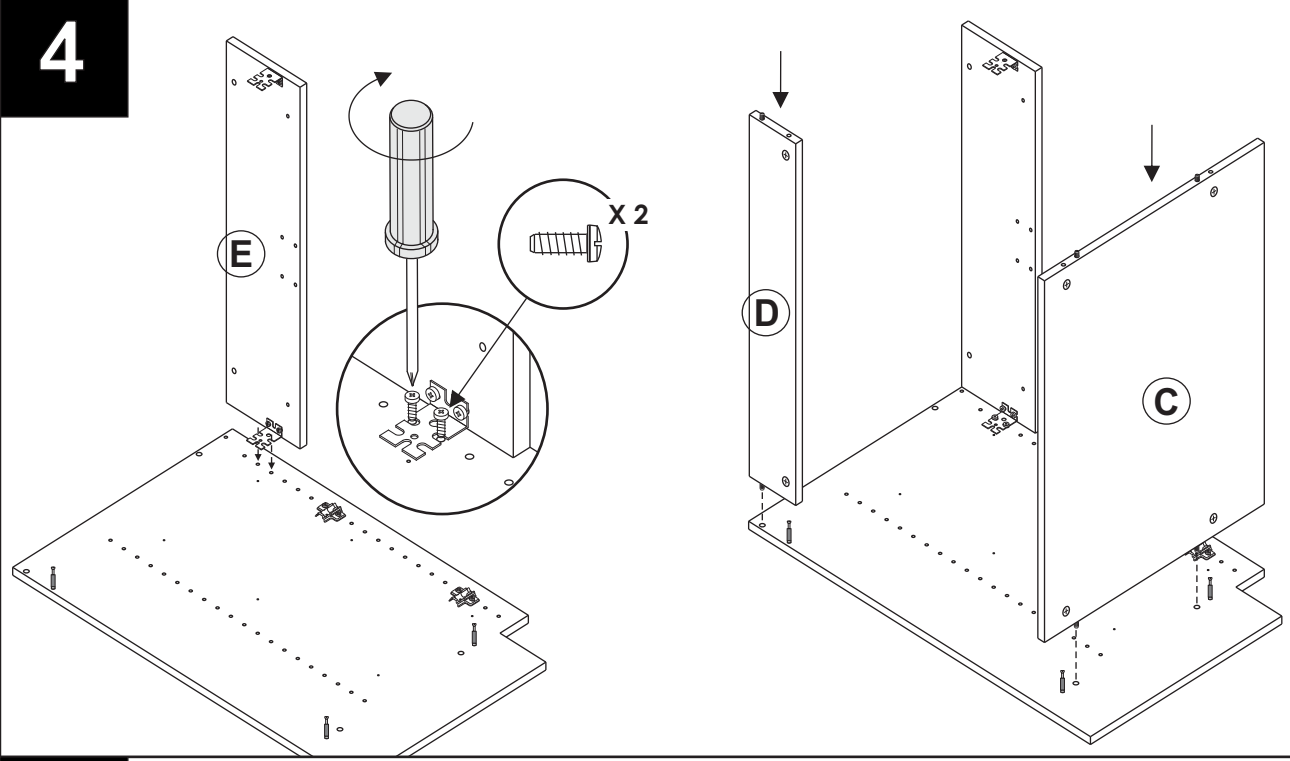
2 X DOOR PANEL
Panneau de porte
Panel de la puerta

6 X 0540 0005	4 X 0540 0045	4 X 0510 0227
6 X 0540 0025	2 X 0540 0095	4 X 0510 0202
6 X 0540 0015	4 X 0540 0100	
8 X 0540 0040	2 X 0560 0015	

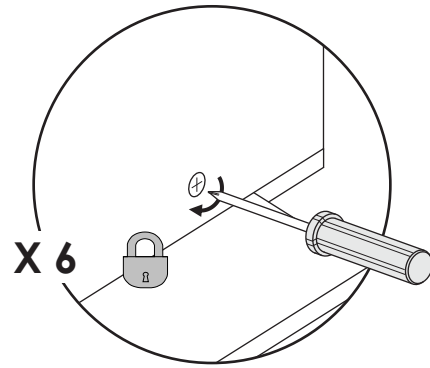
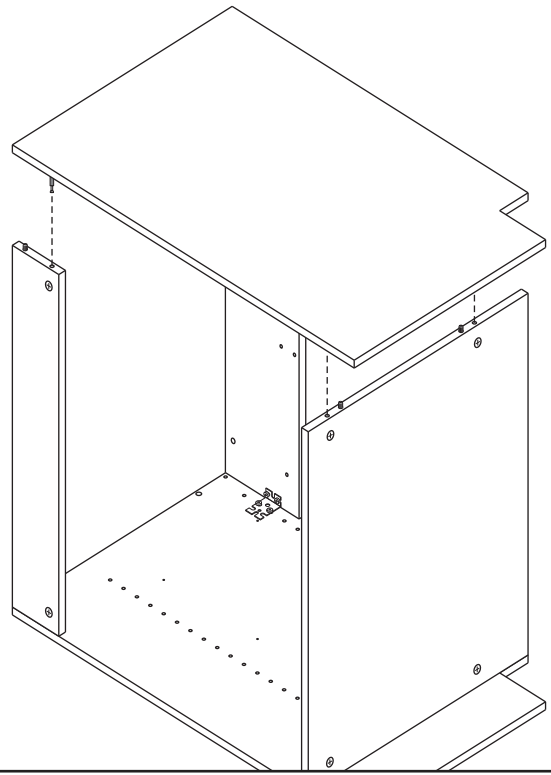
3



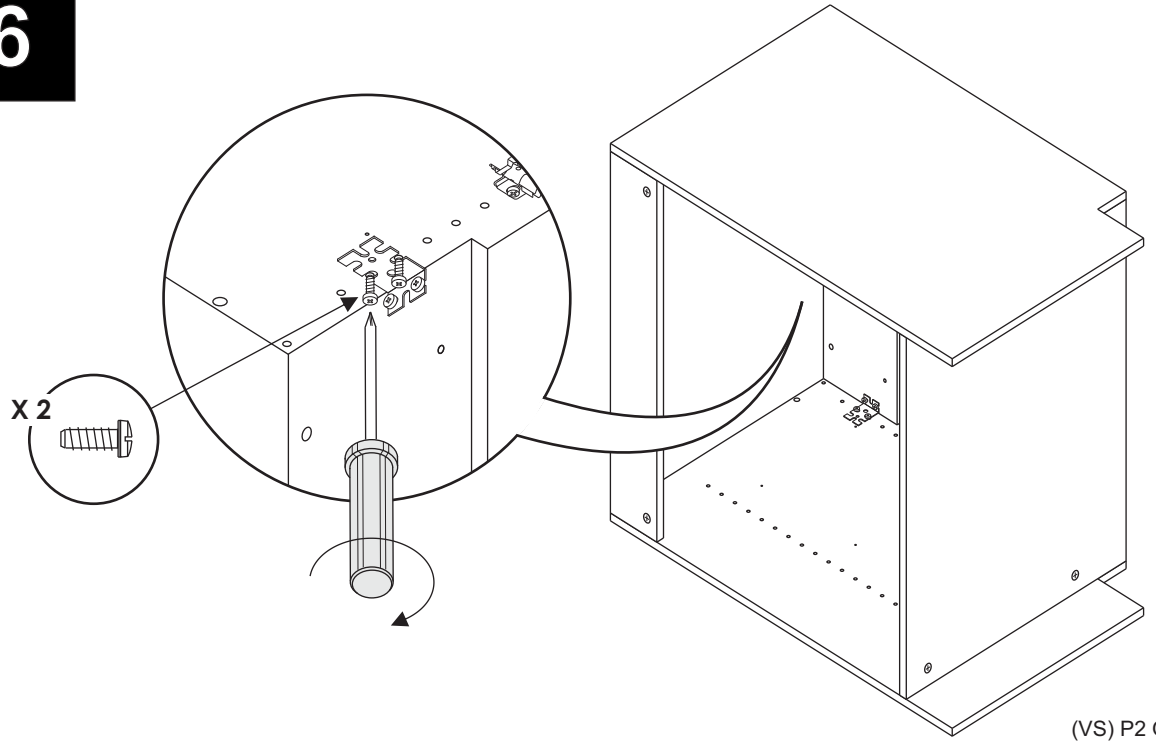
4



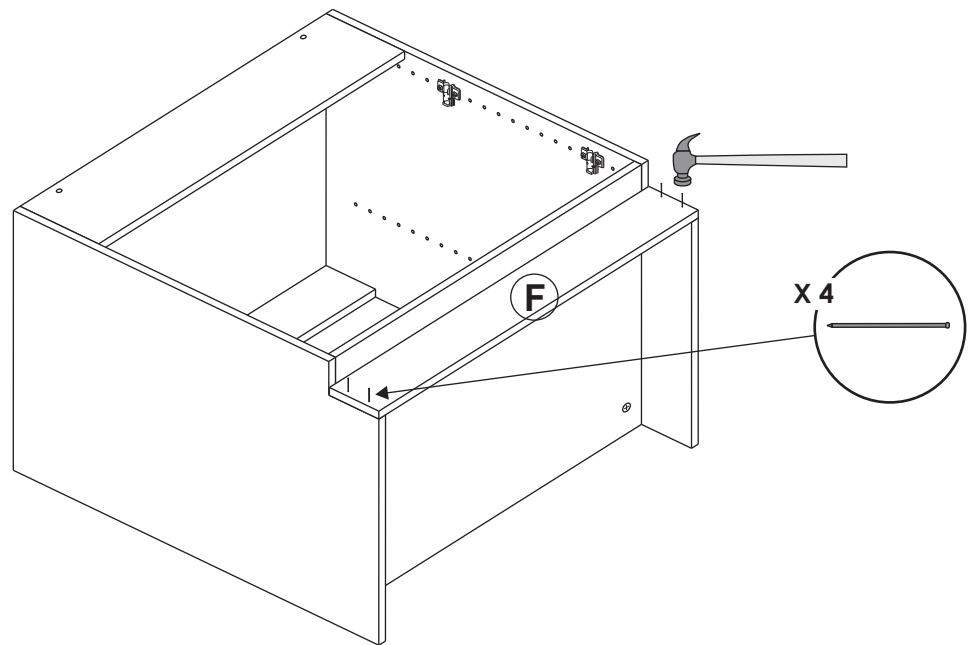
5



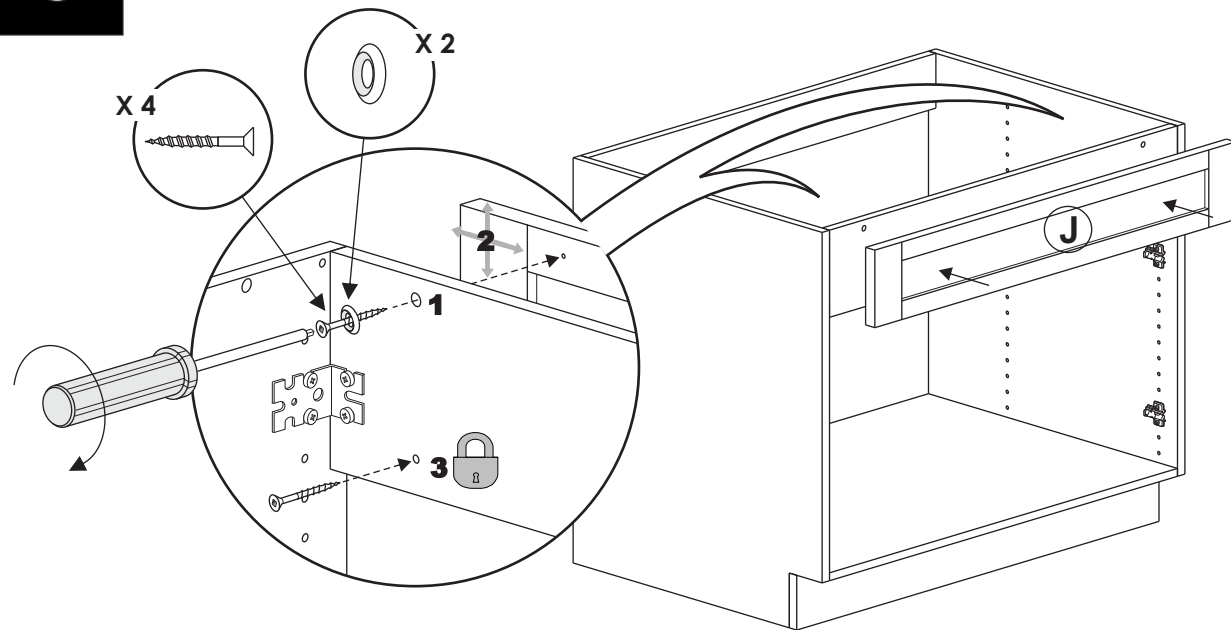
6



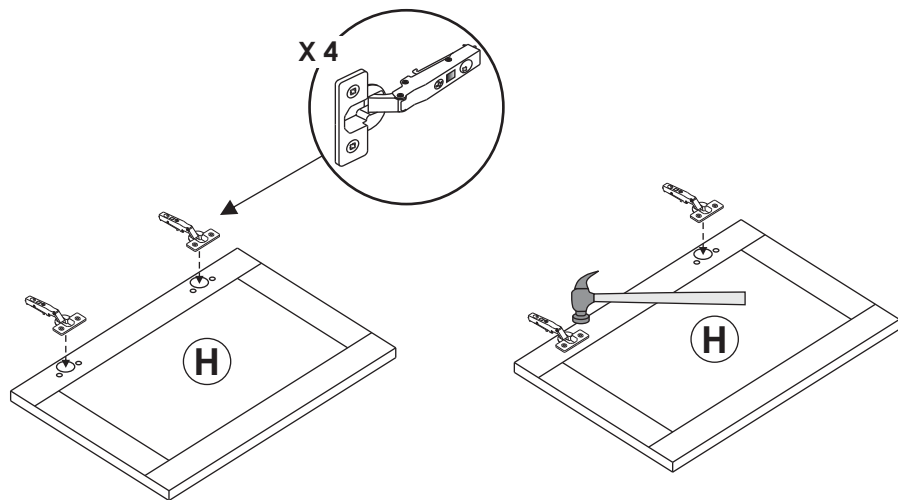
7



8



9



WARNING: Place panel on a clean smooth surface to avoid damage to panel front while installing hardware.

ATTENTION : Placer le panneau sur une surface propre et lisse pour éviter des dommages à l'avant du panneau lors de l'installation de matériel.

ADVERTENCIA: Coloque el panel sobre una superficie limpia para evitar daños en el panel frontal durante la instalación de hardware.

10

