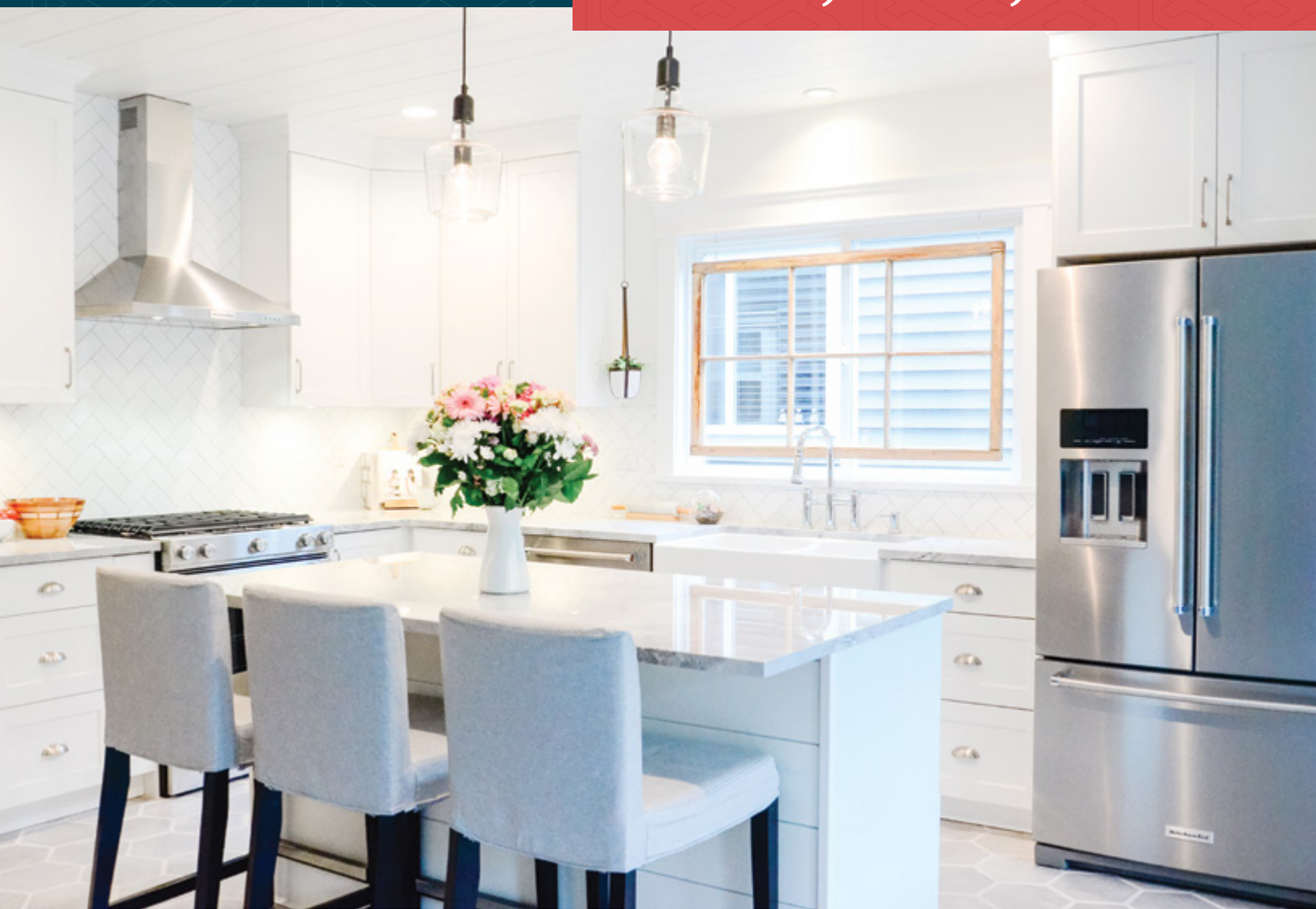


ADVANTAGEONE

READY-TO-ASSEMBLE CABINETS

Dream, Learn, Do Book



EURORITE
cabinets for living





LIVING SPACES

Cabinets create a perfect space- a space where living comes first

Elevate your living space.

Kitchens, bathrooms, closets, and beyond. These are the spaces where you will carve out the memories of your life. Sure, we manufacture beautiful, well-built cabinets, but to us, cabinets aren't just about storage. They should spark joy and inspire life in the very spaces where you live your lives. We care about the details because we know this will be where your life happens. At Eurorite, we design and build cabinets that elevate your space because we're inspired by you and your lifestyle.



European designed cabinets. Canadian built quality.

Standing behind our reputation is a product line of unmatched value and affordability. Manufactured in Canada using quality materials from trusted sources, our **ADVANTAGEONE** Ready-to-Assemble and **ADVANTAGEPLUS** Fully Assembled cabinet lines, along with our **ADVANTAGEFLEX** closet line offer a wide variety of beautiful styles to suit your design and budget.



Manufactured in Canada



Large selection of styles to choose from



40 years of expertise and exceptional service



Manufacturer's warranty included

European-style cabinets - aesthetically pleasing functionality

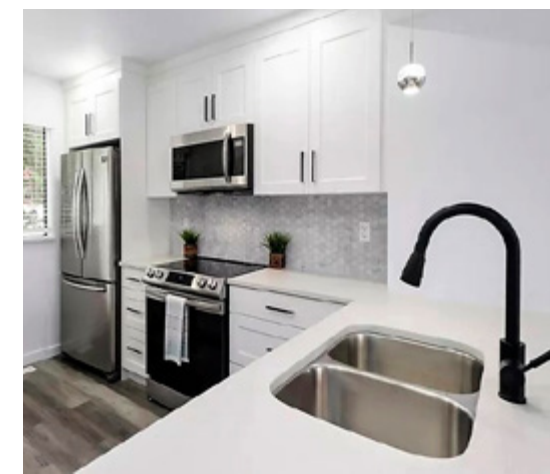
Also called frameless cabinetry, our cabinets have a clean, modern design and offer a better use of space. They give you greater access to storage by eliminating the frame and centre stile typically found on most American-style cabinets. Hinges and drawer slides are tucked out of sight, making it easy to add accessories.

Building great spaces isn't just cabinets.

We've been building premium quality cabinets for almost 40 years, but what truly drives us is a passion to elevate the lives of the people around us. Whether that is well built cabinets that enhance your home, outstanding customer service that makes you smile, or great workplaces where our employees and colleagues feel valued, we believe in building exceptional spaces.

Visit our website at eurorite.com to learn more about:

- Our commitment to our team, our partners in business, and our community
- Our environmental promise
- Our charitable giving



ADVANTAGEONE

DOOR STYLE COLLECTION

Our AdvantageOne Ready-to-Assemble cabinets come in six popular door styles to suit your unique design.

Choose from a variety of attractive, durable, and easy-to-care for materials and profiles.

We stock most cabinet models, so they are ready to ship quickly.

Visit eurorite.com for more info.



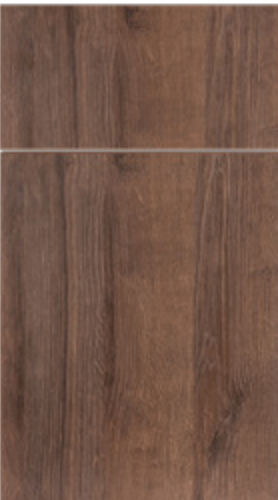
Pacific White (PFW)



San Juan White (R)



Whistler White (WHW)



Sonoma Knight (SNK)



Sierra Howe (SIH)



Whistler Fossil (WHFL)

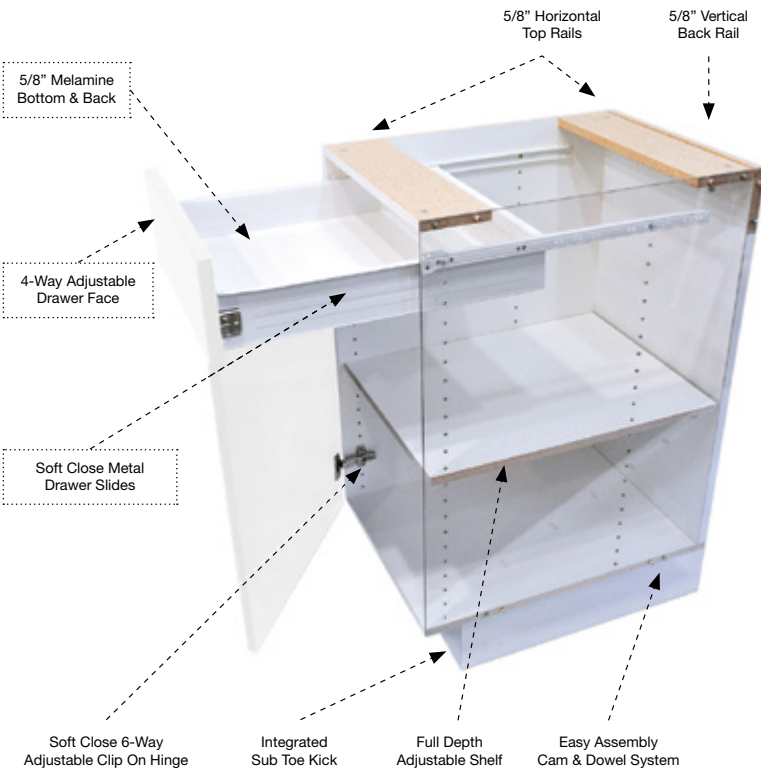
ADVANTAGEONE

READY-TO-ASSEMBLE CABINET CONSTRUCTION

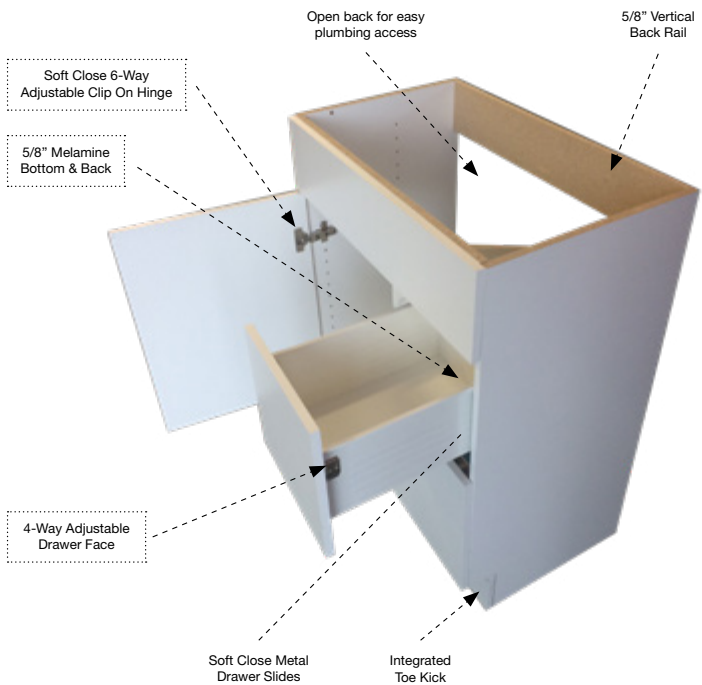
Create your own unique space — all you need is bit more elbow grease!

Everyone has different budgets and needs, which is why we created our specialized line of ready-to-assemble (RTA) cabinets. Perfect for those DIY homeowners or renovators, it offers the best savings by allowing you to assemble the cabinets yourself.

Kitchen Cabinet Construction (34 3/4"H, 23 5/8"D)



Bathroom Cabinet Construction (32 1/4"H, 20 5/8"D)



cabinets for living



ADVANTAGEONE RTA CABINET CONSTRUCTION FEATURES:

- ✓ Soft closing doors with 6-way adjustable European-style hinges.
- ✓ Soft close metal-sided drawers.
- ✓ Metal drawers have 4-way adjustable faces and a heavy-duty 66 lb. static load capacity.
- ✓ Easy-assembly cam and dowel system.
- ✓ Precision manufactured for a great fit.
- ✓ Integrated toe kick and matching cabinet sides (bathroom cabinet toe kick is included).
- ✓ Full depth adjustable shelves.
- ✓ Eco-friendly case and door materials (CARB II and TSCA VI compliant).
- ✓ Everything you need in a cabinet is in one box.
- ✓ Easy handling and transportation.
- ✓ Manufacturer's Warranty.
- ✓ Made in Canada.



Whistler White







Pacific White



San Juan White

ADVANTAGEONE

READY-TO-ASSEMBLE CABINETS

AT-A-GLANCE

Complete Cabinet Collection Listing



EURORITE
cabinets for living

eurorite.com

#212 - 19100 Airport Way
Pitt Meadows, BC V3Y 0E2 CANADA
1.888.464.5063



ADVANTAGEONE

COMPLETE CABINET COLLECTION



All cabinets below are offered in all ADVANTAGEONE doorstyles.

* Indicates **QUICKSHIP**. All others are special order with an attractive lead time.

BASE	SINGLE DOOR	DOUBLE DOOR	SINGLE DOOR/DRAWER	DOUBLE DOOR/DRAWER	3 DRAWER BANK	SINK BASE
	34-3/4"H X 23-5/8"D	34-3/4"H X 23-5/8"D	34-3/4"H X 23-5/8"D	34-3/4"H X 23-5/8"D	34-3/4"H X 23-5/8"D	34-3/4"H X 23-5/8"D
	* B09 - 09" wide * B12 - 12" wide * B15 - 15" wide * B18 - 18" wide * B21 - 21" wide	* B24 - 24" wide * B27 - 27" wide * B30 - 30" wide * B33 - 33" wide * B36 - 36" wide	* BD12 - 12" wide * BD15 - 15" wide * BD18 - 18" wide * BD21 - 21" wide	* BD24 - 24" wide * BD27 - 27" wide * BD30 - 30" wide * BD33 - 33" wide * BD36 - 36" wide	* DB12 - 12" wide * DB15 - 15" wide * DB18 - 18" wide * PB24 - 24" wide * PB30 - 30" wide	* SB30 - 30" wide * SB33 - 33" wide * SB36 - 36" wide
STANDARD CORNER	DIAGONAL CORNER	DIAGONAL SINK CORNER	BLIND CORNER			
	34-3/4"H X 23-5/8"D	34-3/4"H X 23-5/8"D	34-3/4"H X 23-5/8"D	34-3/4"H X 23-5/8"D		
	* BC3333 - 33"x33" wide * BC3636 - 36"x36" wide	BDC36 - 36" wide	BSC42 - 42" wide	BBC27 - 27" wide * BBC30 - 30" wide BBC33 - 33" wide * BBC36 - 36" wide		

WALL	12H APPLIANCE WALL	12H X 24D APPLIANCE WALL	15H APPLIANCE WALL	15H X 15D APPLIANCE WALL	15H X 24D APPLIANCE WALL
	11-3/8"H X 11 7/8"D	11-3/8"H X 23-5/8"D	15-1/8"H X 11 7/8"D	15-1/8"H X 15"D	15-1/8"H X 23-5/8"D
	* W3012 - 30" wide * W3312 - 33" wide * W3612 - 36" wide	* W301224 - 30" wide * W331224 - 33" wide * W361224 - 36" wide	* W2415 - 24" wide * W3015 - 30" wide * W3315 - 33" wide * W3615 - 36" wide	W241515 - 24" wide W301515 - 30" wide W331515 - 33" wide W361515 - 36" wide	W241524 - 24" wide * W301524 - 30" wide * W331524 - 33" wide * W361524 - 36" wide
18H APPLIANCE WALL	18H X 15D APPLIANCE WALL	18H X 24D APPLIANCE WALL	24H WALL	24H X 15D WALL	24H X 24D WALL
	17-5/8"H X 11 7/8"D	17-5/8"H X 15"D	17-5/8"H X 23-5/8"D	24"H X 11-7/8"D	24"H X 15"D
	* W2418 - 24" wide * W3018 - 30" wide * W3318 - 33" wide * W3618 - 36" wide	W241815 - 24" wide W301815 - 30" wide W331815 - 33" wide W361815 - 36" wide	W241824 - 24" wide W301824 - 30" wide W331824 - 33" wide W361824 - 36" wide	W2424 - 24" wide * W3024 - 30" wide * W3324 - 33" wide * W3624 - 36" wide	W242415 - 24" wide W302415 - 30" wide W332415 - 33" wide W362415 - 36" wide

30H 1DR WALL	30H 2DR WALL	30H X 15D 1DR WALL	30H X 15D 2DR WALL	36H 1DR WALL	36H 2DR WALL	36H X 15D 1DR WALL
30 1/4"H X 11 7/8"D	30 1/4"H X 11 7/8"D	30 1/4"H X 15D	30 1/4"H X 15"D	35 1/4"H X 11 7/8"D	35 1/4"H X 11 7/8"D	35 1/4"H X 15"D
* W0930 - 09" wide * W1230 - 12" wide * W1530 - 15" wide * W1830 - 18" wide * W2130 - 21" wide	* W2430 - 24" wide * W2730 - 27" wide * W3030 - 30" wide * W3330 - 33" wide * W3630 - 36" wide	W093015 - 09" wide W123015 - 12" wide W153015 - 15" wide W183015 - 18" wide W213015 - 21" wide	W243015 - 24" wide W273015 - 27" wide W303015 - 30" wide W333015 - 33" wide W363015 - 36" wide	W0936 - 09" wide W1236 - 12" wide W1536 - 15" wide W1836 - 18" wide W2136 - 21" wide	W2436 - 24" wide W2736 - 27" wide W3036 - 30" wide W3336 - 33" wide W3636 - 36" wide	W093615 - 09" wide W123615 - 12" wide W153615 - 15" wide W183615 - 18" wide W213615 - 21" wide
36H X 15D 2DR WALL	30H CORNER WALL	30H X 15D CORNER WALL	30H BLIND CORNER	36H CORNER WALL	36H X 15D CORNER WALL	36H BLIND CORNER
35 1/4"H X 15"D	30 1/4"H X 11 7/8"D	30 1/4"H X 15"D	30 1/4"H X 11 7/8"D	35 1/4"H X 11 7/8"D	35 1/4"H X 15"D	35 1/4"H X 11 7/8"D
W243615 - 24" wide W273615 - 27" wide W303615 - 30" wide W333615 - 33" wide W363615 - 36" wide	* WC2130 - 21" wide * WC2430 - 24" wide	WC243015 - 24" wide WC273015 - 27" wide	WBC2130 - 21" wide * WBC2430 - 24" wide WBC2730 - 27" wide * WBC3030 - 30" wide WBC3330 - 33" wide WBC3630 - 36" wide	WC2136 - 21" wide WC2436 - 24" wide	WC243615 - 24" wide WC273615 - 27" wide	WBC2136 - 21" wide WBC2436 - 24" wide WBC2736 - 27" wide WBC3036 - 30" wide WBC3336 - 33" wide WBC3636 - 36" wide

PANTRY TOPS (combine with same width base cabinet of your choice)

50H PANTRY TOP	55H PANTRY TOP
50-3/8"H X 23-5/8"D	55-5/8"H X 23-5/8"D
* PT1850 - 18" wide * PT2450 - 24" wide	PT1855 - 18" wide PT2455 - 24" wide

ACCESSORY CABINETS

MICROWAVE SHELF	OPEN SHELVES	WINE RACKS
15-1/8"H or 17-5/8"H X 11-5/8"D (15-3/4" shelf)	Wall (WDE) Base (BDE)	
* MW2415 - 24" wide * MW3015 - 30" wide * MW2418 - 24" wide * MW3018 - 30" wide	* WDE30 - 12"w x 30"h * WDE36 - 12"w x 36"h * BDE - 12"w x 34-3/4"h	QUICKSHIP Items are available in std white only * WR0630 - 06"h x 30"w WR1230 - 12"h x 30"w * WR0636 - 06"h x 36"w WR1236 - 12"h x 36"w

VANITIES

VANITY SINK BASE	VANITY DRAWER BANK	30"W COMBO	36"w COMBO	48"w COMBO
32 1/4"H X 20 5/8"D	32 1/4"H X 20 5/8"D	32 1/4"H X 20 5/8"D	32 1/4"H X 20 5/8"D	32 1/4"H X 20 5/8"
* V2421 - 24" wide * V3021 - 30" wide	* VDB-1221 - 12" wide * VDB-1521 - 15" wide	* VD3021-2 - 30" wide	* VD3621-2 - 36" wide	* VD4821-4 - 48" wide
MAKE-UP DRAWER	LINEN TOWER	2 DOOR WALL		
5"H X 20"D	83 7/8"H X 16 3/4"D	31 7/8"H X 8 5/8"D		
	 Shown here with doors & optional drawers			
* PD - 30" wide	* TL15 - 15" wide * 15TLDB - 15" wide (3 drawer) * 1530TLDR - 15" wide [single door pack (x2) required]	* VWALL20 - 20" wide		



ACCESSORIES

BASE FILLER CABINET



* BASFCRAS	6"w Base Filler Cabinet
* BPF_	6"w Front Panel
To be installed between 2 base cabinets; no case or toe base provided.	

2 BIN RECYCLING



Heavy plastic bins with lids on metal frame. Used when you want more than one recycling bin or trash can.
Minimum: 18" cabinet
17 3/8" height
13 5/8" width min.
20 3/8" depth

* GC33L16PO	2 x 33 Liter Bins
* GCPOBRKTRAS	Door Mount Bracket
Note: Full height door base cabinet recommended, as opened back bin lid can collide with drawer in a base cabinet with top drawer.	

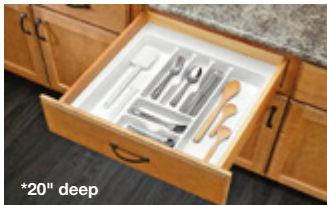
MULTI-BIN RECYCLING



2 or 3 bin recycling centre. Available in white & gray. Odor blocking lid. 3 bin includes 1 x 20L and 2 x 10L bins. 4 bin is 4 x 10L bins
Minimum: 18" cabinet
16 1/2" H
13 3/8" W
19" D

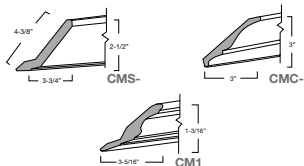
RECCTR2BINWHT	2 Bin White
* RECCTR2BINGRY	2 Bin Gray
RECCTR3BINWHT	3 Bin White
* RECCTR3BINGRY	3 Bin Gray

CUTLERY TRAY



* CT15RAS	15" Wide
* CT18RAS	18" Wide
* CT24RAS	24" Wide

CROWN MOLDING



- * Shaker Crown 108"L
- * Colonial Crown 108"L
- * Standard Crown 96"L (non-matte white)
- * Riser 96"L

BASE CABINET OPTIMIZER



* BASPO09SHLF	9" base pull-out
* BASPO12SHLF	12" base pull-out
* BASPO18SHLF	18" base pull-out
<ul style="list-style-type: none"> • Side mounted pullout • Soft-close, full extension • Reversible for left or right • 3 baskets included • Load capacity 20 kg 	

APPLIANCE LIFTER



HDLIFTRAS	Fits into 15"W Base
Note: Shelf is not supplied with this lift. In some cases the adjustable shelf supplied with the cabinet can be cut to fit. Fits into 15"w base only. Hardware only; must be installed in 15" base cabinet on site.	

LAZY SUSAN



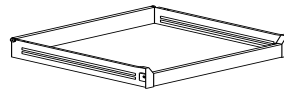
* LS33RAS	24 LAZY SUSAN
* LS36RAS	28 LAZY SUSAN

UTENSIL TRAY



* UT15RAS	15" Wide (large trays)
* UT18RAS	18" Wide (large trays)
* UT24RAS	24" Wide (large trays)

PULL OUT DRAWERS



Add to Base & Pantry Cabinets for improved functionality

* POD12	12" Pull Out Drawer
* POD15	15" Pull Out Drawer
* POD18	18" Pull Out Drawer
* POD21	21" Pull Out Drawer
* POD24	24" Pull Out Drawer
* POD27	27" Pull Out Drawer
* POD30	30" Pull Out Drawer
* POD33	33" Pull Out Drawer
* POD36	36" Pull Out Drawer

TRAY DIVIDER



* TD12WRAS	12"h White
* TD18WRAS	18"h White
* TD12CRAS	12"h Chrome
* TD18CRAS	18"h Chrome

PULL-OUT BIN



Heavy plastic bin with lid on metal frame. Storage on front of frame for cleaning products etc.
Minimum: 12" cabinet
17 1/4" height
10" width min.
19 3/8" depth

* GC33L12PO	1 x 33 Liter Bin
* GCPOBRKTRAS	Door Mount Bracket

SPICE TRAY



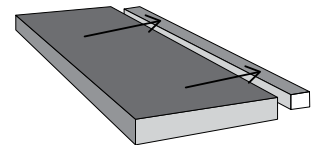
* SP15RAS	15" Wide (angled trays)
Note: Spice Tray to be trimmed on site to fit drawer box.	

BLIND CORNER OPTIMIZER



* BCORAS	Universal Blind Corner Optimizer
Minimum cabinet size is BBC36	

FLOATING SHELVES



(Mounting cleat included)

FLTSHELF24_	24"w x 1-1/2"h x 10"d
FLTSHELF30_	30"w x 1-1/2"h x 10"d
FLTSHELF36_	36"w x 1-1/2"h x 10"d

Available in White, Howe, Knight, Qualicum, Nahanni, and Toba laminates.
Weight capacity: 10 lbs. per lineal foot.
For best results, install between 2 cabinets or adjacent to 1 cabinet, and affix to cabinets as well as wall.

SWING-OUT BIN W/LID



Swing out garbage with lid in stainless steel. Perfect for vanity cabinets and kitchen sink bases.
Minimum: 16" cabinet
14" H
14 1/8" W
12" D

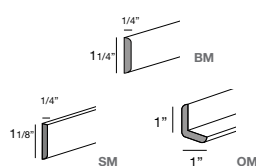
* GC14SORAS	14L Garbage Bin
-------------	-----------------

WOOD CUTLERY TRAY



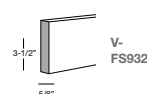
* CTWOOD15RAS	15"W (wood trays)
CTWOOD15RAS can be trimmed to fit 8 3/4"-14 5/8"w, and 15 1/2"-22"d	
* CTWOOD21RAS	21"W (wood trays)
CTWOOD21RAS can be trimmed to fit 14 1/2"-20 5/8"w, and 15 1/2"-22"d	

FINISH MOLDING



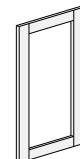
- * Scribe Moulding 96"
- * Batten Moulding 42"
- * Outside Moulding 42"

LIGHT VALANCE



- * Straight Valance 48"
- * Straight Valance 92"

GLASS DOOR OPTIONS



Open Frame Door
(42"h is only available in AdvantagePlus)





Whistler White





Sierra Howe

Pacific White





Whistler White



Whistler Fossil





Whistler White with floating shelves

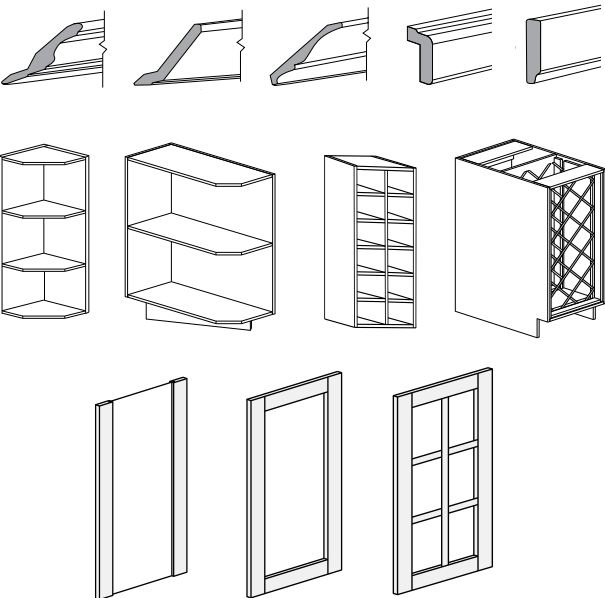


Pacific White



It's the small things that matter in making your space uniquely yours.

Take your cabinets to the next level. We have the accessories you need to create even more wow-factor. Unique handles and pulls, drawer inserts, cabinet organizers. Heck, we've even got something to help you store your recycling. And they're easy to afford and easy to install!



Choose between hanging and floor mounted options for your sliding, bifold and walk-in closets.



Organization and style can go hand in hand!

Closets are heavily used in a bustling home. That's why we offer a closet program that is suitable for both DIY enthusiasts and contractors.

Our configurable units can be used in a multitude of combinations to suit your lifestyle and storage needs. And, best of all, they're easy to install!

Visit our website to learn more about transforming your closets with our **ADVANTAGEFLEX** closet line.

eurorite.com/advantageflex



ADVANTAGEONE

READY-TO-ASSEMBLE CABINETS

Visit our website for more
inspiration and information.
Learn about our 2 other lines.

ADVANTAGEPLUS

FULLY ASSEMBLED CABINETS

ADVANTAGEFLEX

CLOSETS

Call us today to learn about
quality cabinets quick, with:

QUICKSHIP



Eurorite Cabinets Ltd
#212 - 19100 Airport Way
Pitt Meadows, BC V3Y 0E2

Phone: 604-464-5060 | 1-888-464-5063

Fax: 604-464-7210 | 1-866-881-4325



EURORITE
cabinets for living

www.eurorite.com



ERAOKB0822

