

# ADVANTAGE<sup>PLUS</sup>

FULLY ASSEMBLED CABINETS

*Dream, Learn, Do Book*



**EURORITE**  
*cabinets for living*









# LIVING SPACES

*Cabinets create a perfect space- a space where living comes first*



## *Elevate your living space.*

Kitchens, bathrooms, closets, and beyond. These are the spaces where you will carve out the memories of your life. Sure, we manufacture beautiful, well-built cabinets, but to us, cabinets aren't just about storage. They should spark joy and inspire life in the very spaces where you live your lives. We care about the details because we know this will be where your life happens. At Eurorite, we design and build cabinets that elevate your space because we're inspired by you and your lifestyle.



**EURORITE**  
*cabinets for living*

## *European designed cabinets. Canadian built quality.*

Standing behind our reputation is a product line of unmatched value and affordability. Manufactured in Canada using quality materials from trusted sources, our **ADVANTAGEONE** Ready-to-Assemble and **ADVANTAGEPLUS** Fully Assembled cabinet lines, along with our **ADVANTAGEFLEX** closet line offer a wide variety of beautiful styles to suit your design and budget.



*Manufactured in Canada*



*Large selection of styles to choose from*



*40 years of expertise and exceptional service*



*Manufacturer's warranty included*

## *European-style cabinets - aesthetically pleasing functionality*

Also called frameless cabinetry, our cabinets have a clean, modern design and offer a better use of space. They give you greater access to storage by eliminating the frame and centre stile typically found on most American-style cabinets. Hinges and drawer slides are tucked out of sight, making it easy to add accessories.

## *Building great spaces isn't just cabinets.*

We've been building premium quality cabinets for almost 40 years, but what truly drives us is a passion to elevate the lives of the people around us. Whether that is well built cabinets that enhance your home, outstanding customer service that makes you smile, or great workplaces where our employees and colleagues feel valued, we believe in building exceptional spaces.

Visit our website at **eurorite.com** to learn more about:

- Our commitment to our team, our partners in business, and our community
- Our environmental promise
- Our charitable giving



# ADVANTAGEPLUS

## DOOR STYLE COLLECTION

Our premium AdvantagePlus Fully Assembled cabinets come in a large selection of door styles to suit virtually any taste and budget.

Choose from a variety of attractive, durable, and easy-to-care for materials and profiles to create your dream space.

Visit [eurorite.com](http://eurorite.com) for more info.

### THERMOFOIL



Pacific White



Whistler White



Santos White



Seymour White



San Juan White



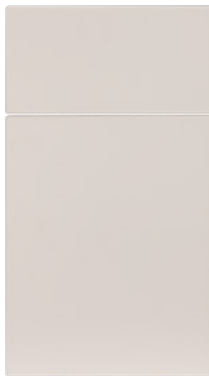
Capilano White



Pacific Stratus



Whistler Stratus



Pacific Dorian



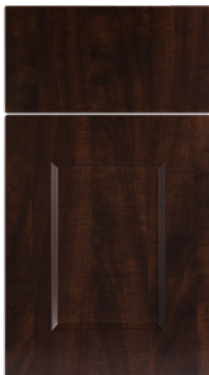
Whistler Dorian



Pacific Boulder



Whistler Boulder



Whistler Chocolate Pear





# ADVANTAGE<sup>PLUS</sup>

## DOOR STYLE COLLECTION

### THERMOFOIL



Pacific Fossil



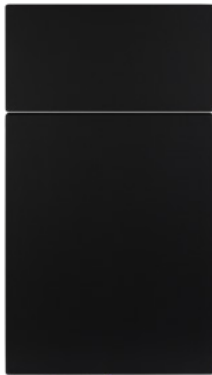
Whistler Fossil



Pacific Charcoal



Whistler Charcoal



Pacific Coal



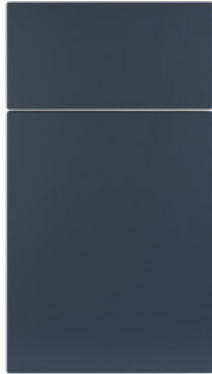
Whistler Coal



Pacific Sage



Whistler Sage



Pacific Midnight



Whistler Midnight



Pacific Toba



Whistler Toba



Pacific Qualicum



Whistler Qualicum



Pacific Howe



Whistler Howe



Pacific Nahanni



Whistler Nahanni



Pacific Knight



Whistler Knight

# ADVANTAGEPLUS

## DOOR STYLE COLLECTION

### THERMOFUSED LAMINATE (TFL)



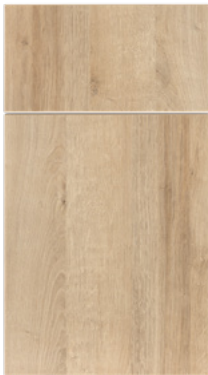
Sonoma Gloss White



Sonoma Toba



Sonoma Qualicum



Sonoma Howe



Sonoma Nahanni



Sonoma Knight

### WRAPPED LAMINATE (5 PIECE)



Sierra Toba



Sierra Qualicum



Sierra Howe



Sierra Nahanni



Sierra Knight

### PAINTED (MDF)



Olympic White



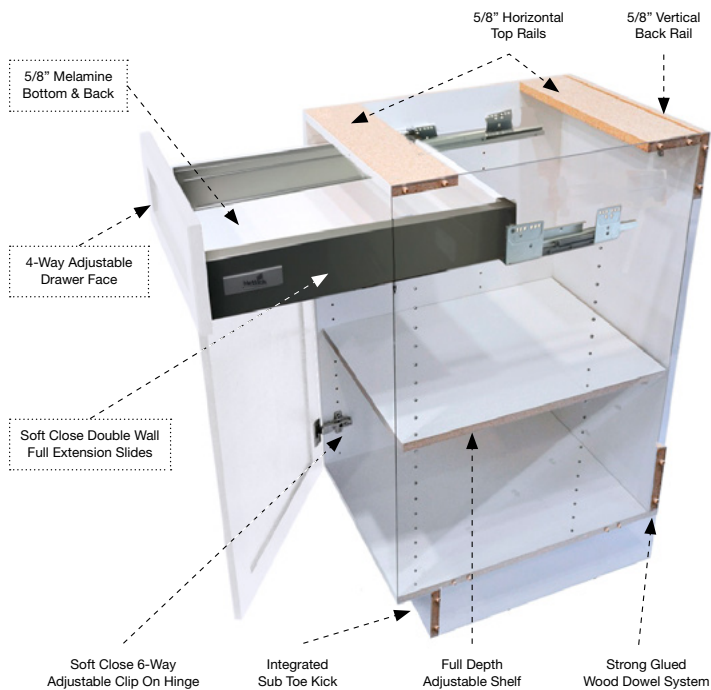


*Combining the ultimate selection of style, colour, and price ... not to mention ease of installation!*

Made in Canada using sturdy time-honoured construction techniques, our AdvantagePlus cabinets are factory assembled, ready to install, and as always come with our manufacture's warranty. So much flexibility to tailor your space just the way you envision, without breaking the bank.

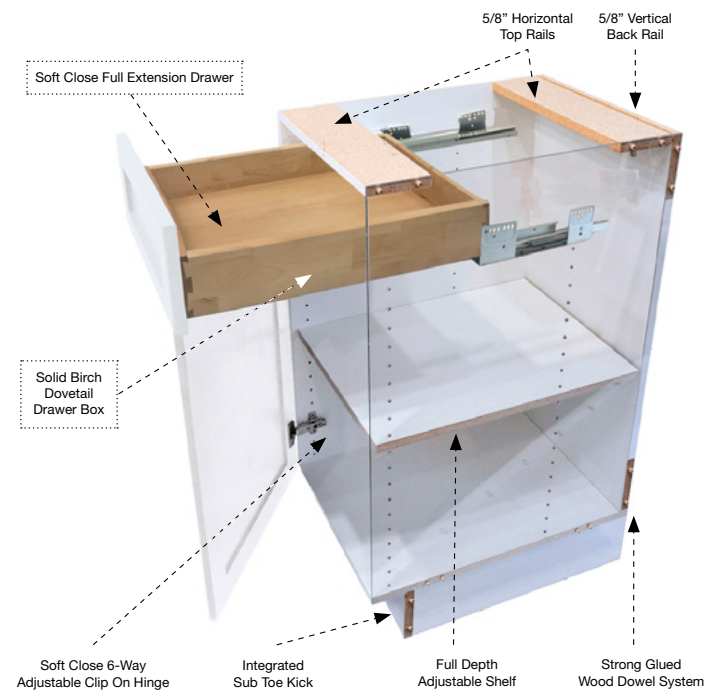
### Cabinet Construction with European Double-Walled Metal Drawers

(34 3/4"H, 23 5/8"D)



### Cabinet Construction with Dovetail Drawers

(32 1/4"H, 20 5/8"D)



\*Vanity cabinets are as above, but with top rails and back removed for ease of installation with plumbing fixtures.

- ✓ Soft closing doors with 6-way adjustable, German premium European-style hinges
- ✓ Choice of 2 adjustable drawer boxes: Birch dovetail or premium German double-walled metal.
- ✓ Drawers are soft-close and full-extension, with German premium undermounted hardware.
- ✓ Strong, traditional dowel and glue assembled construction.
- ✓ Precision manufactured and assembled for a great fit.
- ✓ Integrated toe kick and matching cabinet sides.
- ✓ Full depth adjustable shelves.
- ✓ Eco-friendly case and door materials (CARB II and TSCA VI compliant).
- ✓ Easy and quick to install.
- ✓ Manufacturer's warranty with lifetime warranty on hinges and drawer slides.
- ✓ Made in Canada.
- ✓ Large offering of door styles and cabinet options.







*Seymour White*







*Pacific Charcoal and Sonoma Howe*









*Pacific White & Fossil, and Howe shelves*









*Olympic White*









*Whistler White & Chocolate Pear*





*Seymour White*







*Olympic White and Sierra Howe*















*Whistler White*





*Whistler Boulder*







*Whistler Charcoal & Nahanni*





*Sonoma Diamond Gloss*





# ADVANTAGE<sup>PLUS</sup>

FULLY ASSEMBLED CABINETS

## AT-A-GLANCE

*Complete Cabinet Collection Listing*



**EURORITE**  
*cabinets for living*

**eurorite.com**  
#212 - 19100 Airport Way  
Pitt Meadows, BC V3Y 0E2 CANADA  
1.888.464.5063





# ADVANTAGEPLUS

## COMPLETE CABINET COLLECTION



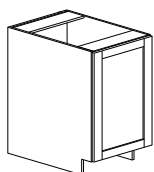
**EUROLITE**  
cabinets for living

All cabinets below are offered in all **ADVANTAGEPLUS** doorstyles.

\* Indicates **QUICKSHIP** items, in Whistler White with European double-walled metal drawers only.

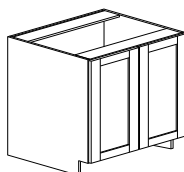
### BASE

**SINGLE DOOR**  
34-3/4"H X 23-5/8"D



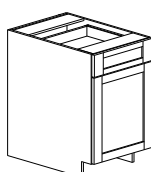
\* B09 - 09" wide  
B12 - 12" wide  
B15 - 15" wide  
\* B18 - 18" wide  
B21 - 21" wide

**DOUBLE DOOR**  
34-3/4"H X 23-5/8"D



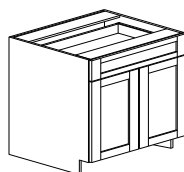
\* B24 - 24" wide  
B27 - 27" wide  
B30 - 30" wide  
B33 - 33" wide  
B36 - 36" wide

**SINGLE DOOR/DRAWER**  
34-3/4"H X 23-5/8"D



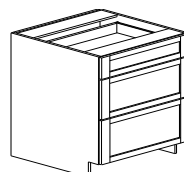
\* BD12 - 12" wide  
\* BD15 - 15" wide  
\* BD18 - 18" wide  
\* BD21 - 21" wide

**DOUBLE DOOR/DRAWER**  
34-3/4"H X 23-5/8"D



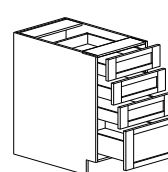
\* BD24 - 24" wide  
\* BD27 - 27" wide  
\* BD30 - 30" wide  
\* BD33 - 33" wide  
BD36 - 36" wide

**3 DRAWER BANK**  
34-3/4"H X 23-5/8"D



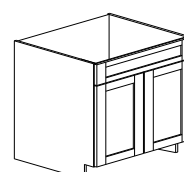
\* DB12 - 12" wide  
\* DB15 - 15" wide  
\* DB18 - 18" wide  
\* PB24 - 24" wide  
\* PB30 - 30" wide

**4 DRAWER BANK**  
34-3/4"H X 23-5/8"D



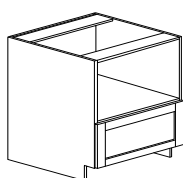
DB412 - 12" wide  
DB415 - 15" wide  
DB418 - 18" wide

**SINK BASE**  
34-3/4"H X 23-5/8"D



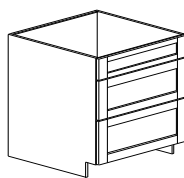
\* SB30 - 30" wide  
\* SB33 - 33" wide  
\* SB36 - 36" wide

**BASE MICROWAVE**  
34-3/4"H X 23-5/8"D



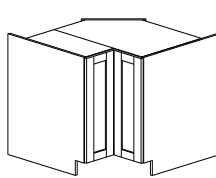
\* BMW24 - 24" wide  
BMW30 - 30" wide  
BMW24 - 24" wide front panel  
BMW30 - 30" wide front panel

**COOKTOP BASE**  
34-3/4"H X 23-5/8"D



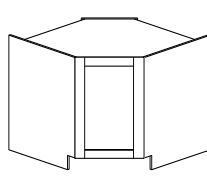
PBCT30 - 30" wide

**STANDARD CORNER**  
34-3/4"H X 23-5/8"D



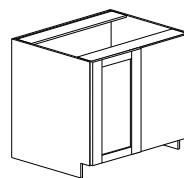
BC3333 - 33"x33" wide  
BC3636 - 36"x36" wide  
BC3336/3633 - 33"x36" or 36"x33" wide  
BC3339/3933 - 33"x39" or 39"x33" wide  
BC3639/3936 - 36"x39" or 39"x36" wide

**DIAGONAL CORNER**  
34-3/4"H X 23-5/8"D



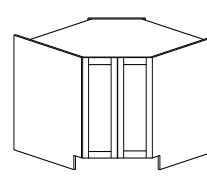
BDC36 - 36" wide

**BLIND CORNER**  
34-3/4"H X 23-5/8"D



BBC27 - 27" wide  
\* BBC30 - 30" wide  
BBC33 - 33" wide  
\* BBC36 - 36" wide

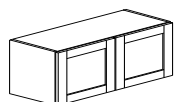
**DIAGONAL SINK CORNER**  
34-3/4"H X 23-5/8"D



BSC42 - 42" wide

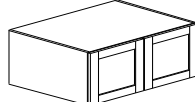
### WALL

**12H APPLIANCE WALL**  
11-3/8"H X 11 7/8"D



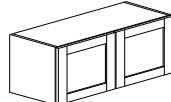
W3012 - 30" wide  
W3312 - 33" wide  
W3612 - 36" wide

**12H X 24D APPLIANCE WALL**  
11-3/8"H X 23-5/8"D



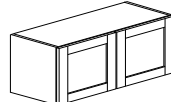
W301224 - 30" wide  
W331224 - 33" wide  
W361224 - 36" wide

**15H APPLIANCE WALL**  
15-1/8"H X 11 7/8"D



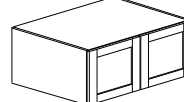
\* W2415 - 24" wide  
\* W3015 - 30" wide  
W3315 - 33" wide  
\* W3615 - 36" wide

**15H X 15D APPLIANCE WALL**  
15-1/8"H X 15"D



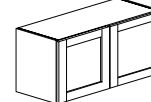
W241515 - 24" wide  
W301515 - 30" wide  
W331515 - 33" wide  
W361515 - 36" wide

**15H X 24D APPLIANCE WALL**  
15-1/8"H X 23-5/8"D



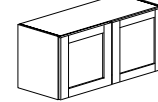
\* W241524 - 24" wide  
W301524 - 30" wide  
\* W331524 - 33" wide  
\* W361524 - 36" wide

**18H APPLIANCE WALL**  
17-5/8"H X 11 7/8"D



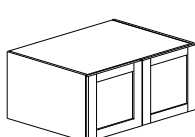
\* W2418 - 24" wide  
\* W3018 - 30" wide  
W3318 - 33" wide  
W3618 - 36" wide

**18H X 15D APPLIANCE WALL**  
17-5/8"H X 15"D



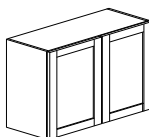
W241815 - 24" wide  
W301815 - 30" wide  
W331815 - 33" wide  
W361815 - 36" wide

**18H X 24D APPLIANCE WALL**  
17-5/8"H X 23-5/8"D



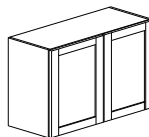
W241824 - 24" wide  
\* W301824 - 30" wide  
\* W331824 - 33" wide  
\* W361824 - 36" wide

**24H WALL**  
24"H X 11-7/8"D



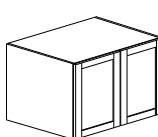
W2424 - 24" wide  
\* W3024 - 30" wide  
\* W3324 - 33" wide  
\* W3624 - 36" wide

**24H X 15D WALL**  
24"H X 15"D



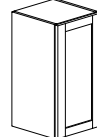
W242415 - 24" wide  
W302415 - 30" wide  
W332415 - 33" wide  
W362415 - 36" wide

**24H X 24D WALL**  
24"H X 23-5/8"D



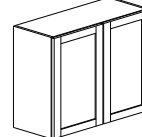
W242424 - 24" wide  
W302424 - 30" wide  
W332424 - 33" wide  
W362424 - 36" wide

**30H 1DOOR WALL**  
30 1/4"H X 11 7/8"D



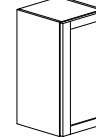
\* W0930 - 09" wide  
\* W1230 - 12" wide  
\* W1530 - 15" wide  
\* W1830 - 18" wide  
\* W2130 - 21" wide

**30H 2DOOR WALL**  
30 1/4"H X 11 7/8"D



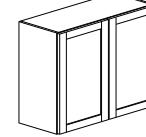
\* W2430 - 24" wide  
\* W2730 - 27" wide  
\* W3030 - 30" wide  
\* W3330 - 33" wide  
\* W3630 - 36" wide

**30H X 15D 1DR WALL**  
30 1/4"H X 15"D



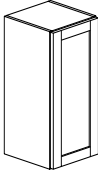
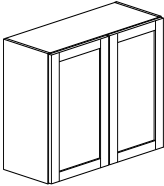
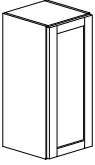
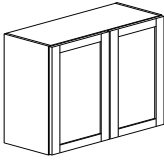
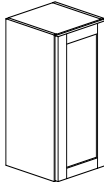
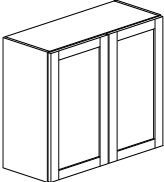
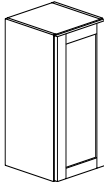
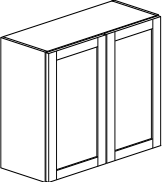
W093015 - 09" wide  
W123015 - 12" wide  
W153015 - 15" wide  
W183015 - 18" wide  
W213015 - 21" wide

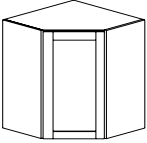
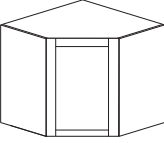
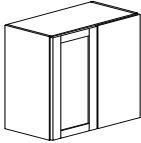
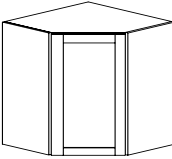
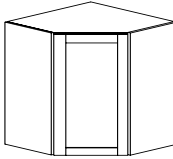
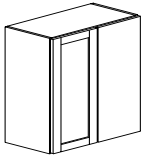
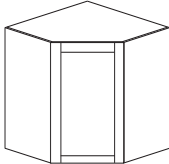
**30H X 15D 2DR WALL**  
30 1/4"H X 15"D

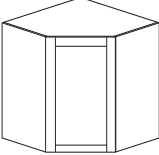
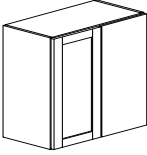
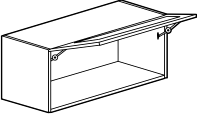


W243015 - 24" wide  
W273015 - 27" wide  
W303015 - 30" wide  
W333015 - 33" wide  
W363015 - 36" wide



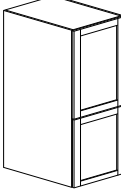
<b>36H 1DR DOOR WALL</b> 35 1/4"H X 11 7/8"D 	<b>36H 2DR DOOR WALL</b> 35 1/4"H X 11 7/8"D 	<b>36H X 15D 1DR WALL</b> 35 1/4"H X 15"D 	<b>36H X 15D 2DR WALL</b> 35 1/4"H X 15"D 	<b>42H X 12D 1DR WALL</b> 41 5/8"H X 11 7/8"D 	<b>42H X 12D 2DR WALL</b> 41 5/8"H X 11 7/8"D 	<b>42"H X 15"D 1DR WALL</b> 41 5/8"H X 15D 	<b>42"H X 15"D 2DR WALL</b> 41 5/8"H X 15D 
* W0936 - 09" wide * W1236 - 12" wide * W1536 - 15" wide * W1836 - 18" wide * W2136 - 21" wide	* W2436 - 24" wide * W2736 - 27" wide * W3036 - 30" wide * W3336 - 33" wide * W3636 - 36" wide	W093615 - 09" wide W123615 - 12" wide W153615 - 15" wide W183615 - 18" wide W213615 - 21" wide	W243615 - 24" wide W273615 - 27" wide W303615 - 30" wide W333615 - 33" wide W363615 - 36" wide	W0942 - 09" wide W1242 - 12" wide W1542 - 15" wide W1842 - 18" wide W2142 - 21" wide	W2442 - 24" wide W2742 - 27" wide W3042 - 30" wide W3342 - 33" wide W3642 - 36" wide	W094215 - 09" wide W124215 - 12" wide W154215 - 15" wide W184215 - 18" wide W214215 - 21" wide	W244215 - 24" wide W274215 - 27" wide W304215 - 30" wide W334215 - 33" wide W364215 - 36" wide

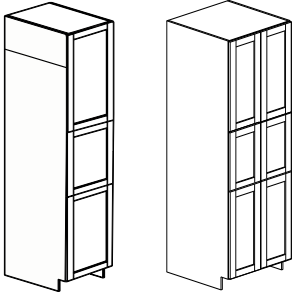
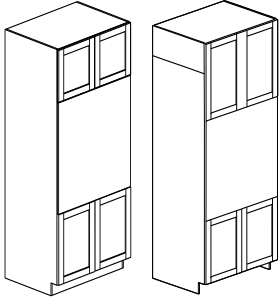
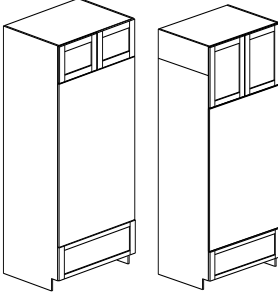
<b>30H CORNER WALL</b> 30 1/4"H X 11 7/8"D 	<b>30H X 15D CORNER WALL</b> 30 1/4"H X 15"D 	<b>30H BLIND CORNER</b> 30 1/4"H X 11 7/8"D 	<b>36H CORNER WALL</b> 35 1/4"H X 11 7/8"D 	<b>36H X 15D CORNER WALL</b> 35 1/4"H X 15"D 	<b>36H BLIND CORNER</b> 35 1/4"H X 11 7/8"D 	<b>42H CORNER WALL</b> 41 5/8"H X 11 7/8"D 
WC2130 - 21" wide * WC2430 - 24" wide	WC243015 - 24" wide WC273015 - 27" wide	WBC2130 - 21" wide WBC2430 - 24" wide WBC2730 - 27" wide * WBC3030 - 30" wide WBC3330 - 33" wide * WBC3630 - 36" wide	WC2136 - 21" wide * WC2436 - 24" wide	WC243615 - 24" wide WC273615 - 27" wide	WBC2136 - 21" wide WBC2436 - 24" wide WBC2736 - 27" wide * WBC3036 - 30" wide WBC3336 - 33" wide * WBC3636 - 36" wide	WC2142 - 21" wide WC2442 - 24" wide

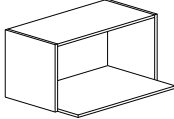
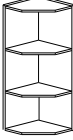
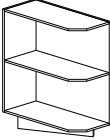
<b>42H X 15D CORNER WALL</b> 41 5/8"H X 15"D 	<b>42H BLIND CORNER</b> 41 5/8"H X 11 7/8"D 	<b>15H X 12D FLIP UP WALL</b> 15 1/8"H X 11 7/8"D 
WC244215 - 24" wide WC274215 - 27" wide	WBC2142 - 21" wide WBC2442 - 24" wide WBC2742 - 27" wide WBC3042 - 30" wide WBC3342 - 33" wide WBC3642 - 36" wide	FU2415 - 24"w x 15"h Flip-up FU2715 - 27"w x 15"h Flip-up FU3015 - 30"w x 15"h Flip-up FU3315 - 33"w x 15"h Flip-up FU3615 - 36"w x 15"h Flip-up WBCFU3615 - 36"w x 30"h CRN Flip-up

**Wall Flip Ups come with 4 door choices:**


- 1) Solid door style to match other cabinetry in the design.
- 2) Aluminum Frame with Clear Glass (AGCL)
- 3) Aluminum Frame with Acid Etched Glass (AGAE)
- 4) Aluminum Frame with Fluted Glass (AGFL)

<b>PANTRY TOPS</b> (to combine with same width base cabinet of your choice) 	<b>50H, 55H, and 60H PANTRY TOPS</b> 50-3/8"H X 23-5/8"D 55-5/8"H X 23-5/8"D 61-3/4"H X 23-5/8"D  * PT1850 - 18" wide * PT2450 - 24" wide  * PT1855 - 18" wide * PT2455 - 24" wide  PT1860 - 18" wide PT2460 - 24" wide
--	---

<b>85H, 90H, 96H BROOM CLOSET/PANTRY</b> 85-1/8"H X 24"D 90-1/8"H X 24"D 96-1/2"H X 24"D 	<b>85H, 90H, 96H TALL WALL OVEN</b> 85-1/8"H X 24"D 90-1/8"H X 24"D 96-1/2"H X 24"D 	<b>85H, 90H, 96H TALL DOUBLE WALL OVEN</b> 85-1/8"H X 24"D 90-1/8"H X 24"D 96-1/2"H X 24"D 
PCL1285 - 12" wide PCL1290 - 12" wide PCL1296 - 12" wide PCL1885 - 18" wide PCL1890 - 18" wide PCL1896 - 18" wide	PCL2485 - 24" wide PCL2490 - 24" wide PCL2496 - 24" wide	WO3385 - 33" wide WO3390 - 33" wide WO3396 - 33" wide

<b>MICROWAVE SHELF</b> 15-1/8"H or 17-5/8"H X 11-5/8"D (15-3/4" shelf) QUICKSHIP option is ready to assemble 	<b>OPEN SHELVES</b> Wall (WDE)  Base (BDE) 
* MW2415 - 24" wide * MW3015 - 30" wide * MW2418 - 24" wide * MW3018 - 30" wide	WDE30 - 12"w x 30"h WDE36 - 12"w x 36"h WDE42 - 12"w x 42"h BDE - 12"w x 34-3/4"h

**WINE RACKS**



\* WR0630 - 06"h x 30"w  
WR1230 - 12"h x 30"w  
\* WR0636 - 06"h x 36"w  
WR1236 - 12"h x 36"w  
WR0642 - 06"h x 42"w  
WR1242 - 12"h x 42"w

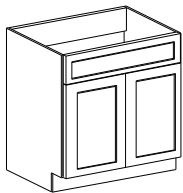
QUICKSHIP Items are available in std white only



# VANITIES

## VANITY SINK BASE

32 1/4"H X 20 5/8"D

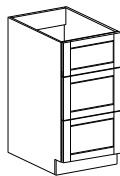


\* V2421 - 24" wide

\* V3021 - 30" wide

## VANITY DRAWER BANK

32 1/4"H X 20 5/8"D

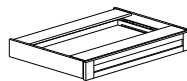


\* VD1221 - 12" wide

\* VD1521 - 15" wide

## MAKE-UP DRAWER

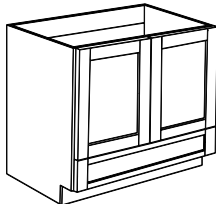
5"H X 20"D



PD - 30" wide

## FULL HEIGHT INVERTED DRAWER VANITY SINK BASE

34 3/4"H X 20 5/8"D



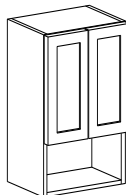
VSDFH2421 - 24" w vanity 2 door

VSDFH3021 - 30" w vanity 2 door

VSDFH3621 - 36" w vanity 2 door

## 2 DOOR WALL

31 7/8"H X 8 5/8"D



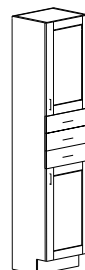
\* OJ - 20" wide

## LINEN TOWERS

83 7/8"H X 16 3/4"D



TL15 - 15" wide



15TLD3 - 15"



## DRAWER OPTIONS

### 2 Options at the same price point!

*AdvantagePlus kitchen and bathroom cabinets give you the freedom to choose without having to pay any up-charge. Cabinets are offered in both European double wall metal AND Birch dovetail.*

*German full-extension, soft-close hardware is standard, too!*

\* QUICKSHIP items are offered with European Double Wall Metal Drawers only

### European Double Walled Metal Drawers



### Birch Dovetail Drawers



# ACCESSORIES

## BASE FILLER CABINET



* BASFCRAS	6"w Base Filler Cabinet
* BPF- <sub>-</sub>	6"w Front Panel

To be installed between 2 base cabinets; no case or toe base provided.

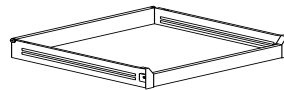
## BASE CABINET OPTIMIZER



* BASPO09SHLF	9" base pull-out
* BASPO12SHLF	12" base pull-out
* BASPO18SHLF	18" base pull-out

- Side mounted pullout
- Soft-close, full extension
- Reversible for left or right
- 3 baskets included
- Load capacity 20 kg

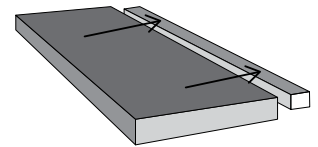
## PULL OUT DRAWERS



Add to Base & Pantry Cabinets for improved functionality (Single Wall and ready to assemble)

* POD12	12" Pull Out Drawer
* POD15	15" Pull Out Drawer
* POD18	18" Pull Out Drawer
* POD21	21" Pull Out Drawer
* POD24	24" Pull Out Drawer
* POD27	27" Pull Out Drawer
* POD30	30" Pull Out Drawer

## FLOATING SHELVES

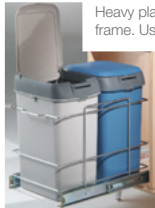


(Mounting cleat included)

FLTSHELF24_	24"w x 1-1/2"h x 10"d
FLTSHELF30_	30"w x 1-1/2"h x 10"d
FLTSHELF36_	36"w x 1-1/2"h x 10"d

Available in White, Howe, Knight, Qualicum, Nahanni, and Toba laminates. Weight capacity: 10 lbs. per lineal foot. For best results, install between 2 cabinets or adjacent to 1 cabinet, and affix to cabinets as well as wall.

## 2 BIN RECYCLING



Heavy plastic bins with lids on metal frame. Used when you want more than one recycling bin or trash can. Minimum: 18" cabinet 17 3/8" height 13 5/8" width min. 20 3/8" depth

* GC33L16PO	2 x 33 Liter Bins
* GCPOBRKTRAS	Door Mount Bracket

Note: Full height door base cabinet recommended, as opened back bin lid can collide with drawer in a base cabinet with top drawer.

## APPLIANCE LIFTER



HDLIFTRAS	Fits into 15"W Base
-----------	---------------------

Note: Shelf is not supplied with this lift. In some cases the adjustable shelf supplied with the cabinet can be cut to fit. Fits into 15"w base only. Hardware only; must be installed in 15" base cabinet on site.

## TRAY DIVIDER



* TD12WRAS	12"h White
* TD18WRAS	18"h White
* TD12CRAS	12"h Chrome
* TD18CRAS	18"h Chrome

## MULTI-BIN RECYCLING



2 or 3 bin recycling centre. Available in white & gray. Odor blocking lid. 3 bin includes 1 x 20L and 2 x 10L bins. 4 bin is 4 x 10L bins. Minimum: 18" cabinet 16 1/2" H 13 3/8" W 19" D

RECCTR2BINWHT	2 Bin White
* RECCTR2BINGRY	2 Bin Gray
RECCTR3BINWHT	3 Bin White
* RECCTR3BINGRY	3 Bin Gray

## LAZY SUSAN



* LS33RAS	24 LAZY SUSAN
* LS36RAS	28 LAZY SUSAN

## PULL-OUT BIN



Heavy plastic bin with lid on metal frame. Storage on front of frame for cleaning products etc. Minimum: 12" cabinet 17 1/4" height 10" width min. 19 3/8" depth

* GC33L12PO	1 x 33 Liter Bin
* GCPOBRKTRAS	Door Mount Bracket

## BLIND CORNER OPTIMIZER



* BCORAS	Universal Blind Corner Optimizer
----------	----------------------------------

Minimum cabinet size is BBC36

## SWING-OUT BIN W/LID



Swing out garbage with lid in stainless steel. Perfect for vanity cabinets and kitchen sink bases. Minimum: 16" cabinet 14" H 14 1/8" W 12" D

* GC14SORAS	14L Garbage Bin
-------------	-----------------

## WOOD CUTLERY TRAY



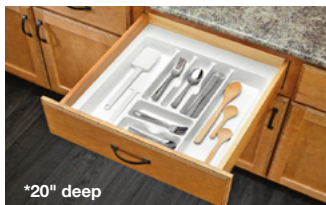
* CTWOOD15RAS	15"W (wood trays)
---------------	-------------------

CTWOOD15RAS can be trimmed to fit 8 3/4"-14 5/8"w, and 15 1/2"-22"d

* CTWOOD21RAS	21"W (wood trays)
---------------	-------------------

CTWOOD21RAS can be trimmed to fit 14 1/2"-20 5/8"w, and 15 1/2"-22"d

## CUTLERY TRAY



* CT15RAS	15" Wide
* CT18RAS	18" Wide
* CT24RAS	24" Wide

## UTENSIL TRAY



* UT15RAS	15" Wide (large trays)
* UT18RAS	18" Wide (large trays)
* UT24RAS	24" Wide (large trays)

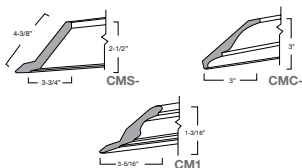
## SPICE TRAY



* SP15RAS	15" Wide (angled trays)
-----------	-------------------------

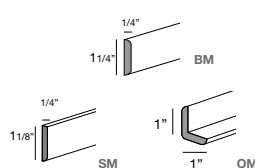
Note: Spice Tray to be trimmed on site to fit drawer box.

## CROWN MOLDING



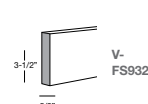
- \* Shaker Crown 108"L
- \* Colonial Crown 108"L
- \* Standard Crown 96"L (non-matte white)
- \* Riser 96"L

## FINISH MOLDING



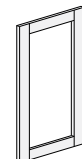
- \* Scribe Moulding 96"
- \* Batten Moulding 42"
- \* Outside Moulding 42"

## LIGHT VALANCE



- \* Straight Valance 48"
- \* Straight Valance 92"

## GLASS DOOR OPTIONS



Open Frame Door (42"h is only available in AdvantagePlus)









## *Whistler Stratus & Boulder*







*Pacific Coal & Midnight*











*Santos White*





*Seymour White*





*Whistler White*





*Sierra Howe*





*Sonoma Nahanni*





*Whistler Midnight*





*Olympic White*







*Sierra Qualicum*





*Pacific Fossil*







*Pacific Dorian*





*Pacific White*







*Whistler White*







*Sierra Toba*



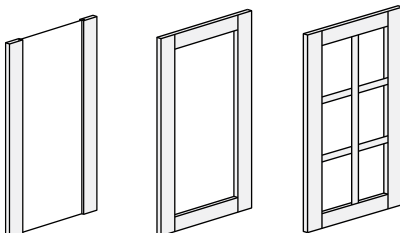
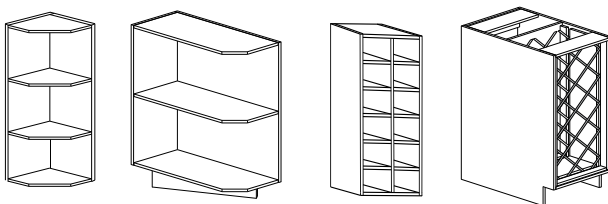


# ADVANTAGEONE

## ACCESSORIES

*It's the small things that matter in making your space uniquely yours.*

Take your cabinets to the next level. We have the accessories you need to create even more wow-factor. Unique handles and pulls, drawer inserts, cabinet organizers. Heck, we've even got something to help you store your recycling. And they're easy to afford and easy to install!!







*Organization and style can go hand in hand!*

Closets are heavily used in a bustling home. That's why we offer a closet program that is suitable for both DIY enthusiasts and contractors.

Our configurable units can be used in a multitude of combinations to suit your lifestyle and storage needs. And, best of all, they're easy to install!

Choose between hanging and floor mounted options for your sliding, bifold and walk-in closets.



Visit our website to learn more about transforming your closets with our **ADVANTAGEFLEX** closet line.

[eurorite.com/advantagflex](http://eurorite.com/advantagflex)



**EURORITE**  
cabinets for living



# ADVANTAGE<sup>PLUS</sup>

FULLY ASSEMBLED CABINETS

Visit our website for more  
inspiration and information.  
Learn about our 2 other lines.

## ADVANTAGE<sup>ONE</sup>

READY-TO-ASSEMBLE CABINETS

## ADVANTAGE<sup>FLEX</sup>

CLOSETS

Call us today to learn about  
quality cabinets quick, with:

**QUICKSHIP**



**Eurorite Cabinets Ltd**  
#212 - 19100 Airport Way  
Pitt Meadows, BC V3Y 0E2

Phone: 604-464-5060 | 1-888-464-5063  
Fax: 604-464-7210 | 1-866-881-4325

[www.eurorite.com](http://www.eurorite.com)



**EURORITE**  
*cabinets for living*

ERAPKB0922

